

Datasheet for ABIN790677
anti-ERK1/2 antibody

2 Images



[Go to Product page](#)

Overview

Quantity:	50 µg
Target:	ERK1/2 (MAPK1/3)
Reactivity:	Human, Mouse, Rat
Host:	Mouse
Clonality:	Monoclonal
Conjugate:	This ERK1/2 antibody is un-conjugated
Application:	Western Blotting (WB), ELISA, Immunohistochemistry (IHC), Immunohistochemistry (Paraffin-embedded Sections) (IHC (p)), Immunoprecipitation (IP)

Product Details

Brand:	IHC-plus™
Immunogen:	HPLC purified murine recombinant MAP Kinase. Type of Immunogen: Recombinant protein
Isotype:	IgG2a
Specificity:	Recognizes the 42kD mouse MAP Kinase encoded by the mapk gene. Species cross-reactivity: Human and rat.
Purification:	Protein G purified

Target Details

Target:	ERK1/2 (MAPK1/3)
---------	------------------

Target Details

Alternative Name: ERK1 + ERK2 ([MAPK1/3 Products](#))

Background: Name/Gene ID: ERK1/ERK2

Synonyms: ERK1/ERK2

This antibody detects: ERK1 + ERK2

Application Details

Application Notes: Approved: ELISA, IHC, IHC-P (10 µg/mL), IP, WB (0.5 µg/mL)

Usage: Suitable for use in ELISA, Immunoprecipitation (mouse 3T3 cells), Immunohistochemistry-Paraffin (human FFPE tissues) and Western Blot (human A431 cells, mouse 3T3 cells and rat L6 cells). Proteins were visualized using a goat anti-mouse secondary antibody conjugated to HRP and a chemiluminescence detection system.

Comment: Target Species of Antibody: Mouse

Restrictions: For Research Use only

Handling

Format: Liquid

Concentration: Lot specific

Buffer: PBS, 0.05 % sodium azide. Sourced in Ascites.

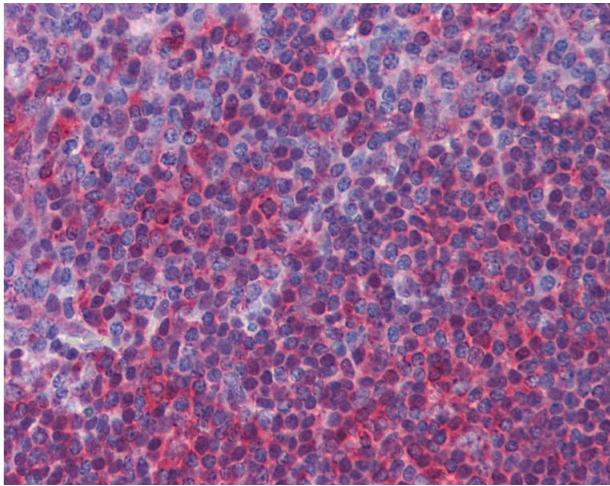
Preservative: Sodium azide

Precaution of Use: This product contains Sodium azide: a POISONOUS AND HAZARDOUS SUBSTANCE which should be handled by trained staff only.

Handling Advice: avoid freeze thaw cycles.

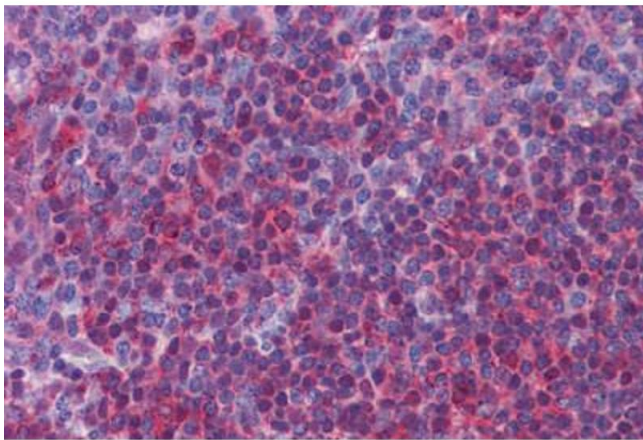
Storage: 4 °C, -20 °C

Storage Comment: Short term 4°C, long term aliquot and store at -20°C, avoid freeze-thaw cycles.



Immunohistochemistry

Image 1. Anti-ERK1/2 antibody IHC of human tonsil. Immunohistochemistry of formalin-fixed, paraffin-embedded tissue after heat-induced antigen retrieval. Antibody concentration 10 ug/ml.



Immunohistochemistry (Formalin-fixed Paraffin-embedded Sections)

Image 2. Human Tonsil: Formalin-Fixed, Paraffin-Embedded (FFPE)