



[Go to Product page](#)

Datasheet for ABIN790694

anti-HSPB6 antibody

2 Images

Overview

Quantity:	0.25 mg
Target:	HSPB6
Reactivity:	Human, Rat
Host:	Mouse
Clonality:	Monoclonal
Conjugate:	This HSPB6 antibody is un-conjugated
Application:	Western Blotting (WB), ELISA, Immunohistochemistry (IHC), Immunofluorescence (IF), Immunohistochemistry (Paraffin-embedded Sections) (IHC (p))

Product Details

Brand:	IHC-plus™
Immunogen:	Recombinant human HSP20. Type of Immunogen: Recombinant protein
Isotype:	IgG2a
Specificity:	Recognizes human recombinant HSP20 protein and HSP20 from human and rat cardiac tissue extracts.
Purification:	Protein A purified

Target Details

Target:	HSPB6
---------	-------

Target Details

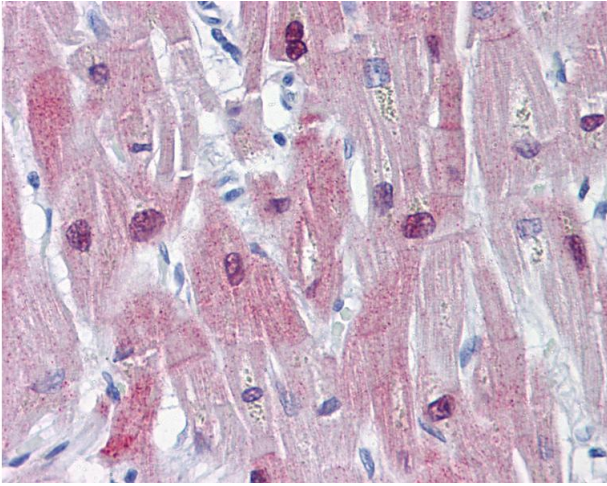
Alternative Name:	HSPB6 / HSP20 (HSPB6 Products)
Background:	Name/Gene ID: HSPB6 Synonyms: HSPB6, Heat shock protein beta-6, Hsp20
Gene ID:	126393
UniProt:	O14558

Application Details

Application Notes:	Approved: ELISA, IF, IHC, IHC-P (10 µg/mL), WB Usage: Suitable for use in ELISA, Western Blot, IHC-P (human FFPR tissues) and Immunofluorescence.
Comment:	Target Species of Antibody: Human
Restrictions:	For Research Use only

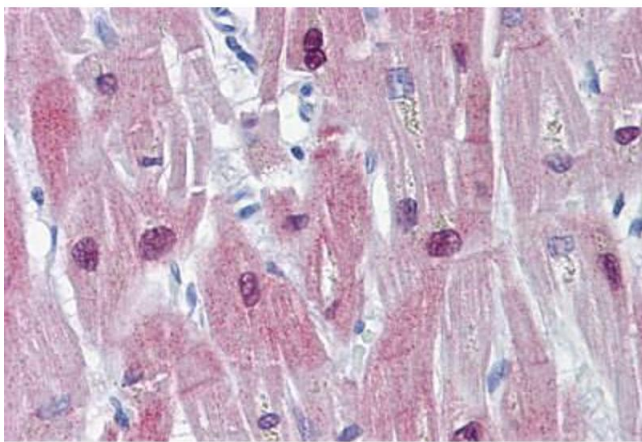
Handling

Format:	Liquid
Concentration:	Lot specific
Buffer:	PBS, pH 7.4, 0.09 % sodium azide. Sourced in Ascites.
Preservative:	Sodium azide
Precaution of Use:	This product contains Sodium azide: a POISONOUS AND HAZARDOUS SUBSTANCE which should be handled by trained staff only.
Handling Advice:	Avoid freeze-thaw cycles.
Storage:	4 °C, -20 °C
Storage Comment:	Short term: 4°C. Long term: Store at -20°C. Avoid freeze-thaw cycles.



Immunohistochemistry

Image 1. Anti-HSPB6 antibody IHC of human heart. Immunohistochemistry of formalin-fixed, paraffin-embedded tissue after heat-induced antigen retrieval. Antibody concentration 10 ug/ml.



Immunohistochemistry (Formalin-fixed Paraffin-embedded Sections)

Image 2. Human Heart: Formalin-Fixed, Paraffin-Embedded (FFPE)