

Datasheet for ABIN790748

**anti-GFP Tag antibody (N-Term)**[Go to Product page](#)**1** Image

## Overview

Quantity:	100 µg
Target:	GFP Tag
Binding Specificity:	N-Term
Reactivity:	Aequorea victoria
Host:	Mouse
Clonality:	Monoclonal
Conjugate:	This GFP Tag antibody is un-conjugated
Application:	Western Blotting (WB), ELISA, Immunohistochemistry (IHC)

## Product Details

Immunogen:	GFP from the jellyfish Aequorea victoria N-Terminal peptide-KLH conjugates
	Type of Immunogen: Synthetic peptide
Clone:	LGB-1
Isotype:	IgG1
Specificity:	Recognizes native and denatured forms of GFP and its variants EGFP, YFP, EYFP, and CFP.
Purification:	Affinity purified

## Target Details

Target:	GFP Tag
---------	---------

Target Details

Abstract: GFP Tag Products

Target Type: Tag

Application Details

Application Notes: Approved: ELISA, IHC, WB (1:1000)

Restrictions: For Research Use only

Handling

Format: Liquid

Concentration: Lot specific

Buffer: PBS, pH 7.4, 0.05 % sodium azide

Preservative: Sodium azide

Precaution of Use: This product contains Sodium azide: a POISONOUS AND HAZARDOUS SUBSTANCE which should be handled by trained staff only.

Storage: -20 °C

Storage Comment: Store at -20°C for up to 1 year.

Expiry Date: 12 months

Images

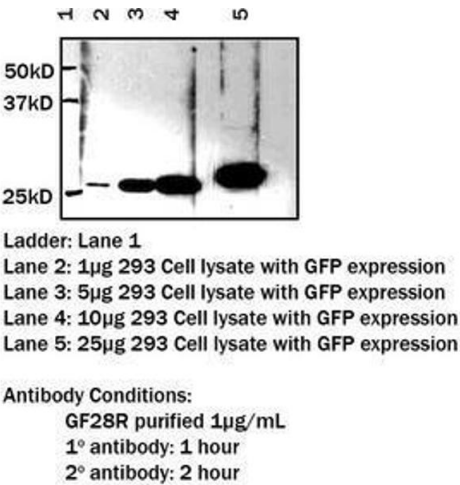


Image 1.