



Datasheet for ABIN790781  
**anti-ADRA1D antibody**



[Go to Product page](#)

1 Image

Overview

Quantity:	100 µL
Target:	ADRA1D
Reactivity:	Human, Rat, Mouse
Host:	Rabbit
Clonality:	Polyclonal
Conjugate:	This ADRA1D antibody is un-conjugated
Application:	Western Blotting (WB), ELISA

Product Details

Immunogen:	Synthetic peptide conjugated to KLH Type of Immunogen: Synthetic peptide - KLH conjugated
Isotype:	IgG
Specificity:	ADRA1D antibody detects endogenous levels of total ADRA1D protein. Not tested with other proteins.
Purification:	Protein A purified

Target Details

Target:	ADRA1D
Alternative Name:	ADRA1D ( <a href="#">ADRA1D Products</a> )
Background:	Name/Gene ID: ADRA1D

## Target Details

---

Subfamily: Adrenergic

Family: GPCR

Synonyms: ADRA1D, Alpha 1d, Alpha-1D adrenergic receptor, ADRA1R, Alpha-1D adrenoceptor, Alpha-1D adrenoreceptor, ALPHA1, Alpha-1D-adrenergic receptor, Alpha-adrenergic receptor 1a, Alpha1delta-AR, DAR, ADRA1, Adrenoceptor alpha 1D, Alpha-1A adrenergic receptor, DJ779E11.2

---

Gene ID: 146

---

UniProt: [P25100](#)

## Application Details

---

Application Notes: Approved: ELISA (1:8000), WB (1:500)

---

Comment: Target Species of Antibody: Human

---

Restrictions: For Research Use only

## Handling

---

Format: Liquid

---

Concentration: Lot specific

---

Buffer: PBS, pH 7.4, 0.05 % sodium azide

---

Preservative: Sodium azide

---

Precaution of Use: This product contains Sodium azide: a POISONOUS AND HAZARDOUS SUBSTANCE which should be handled by trained staff only.

---

Storage: -20 °C

---

Storage Comment: Store at -20°C for up to 1 year.

---

Expiry Date: 12 months

This antibody, identifies a band of approximately 63 kDa in human fetal liver lysates.

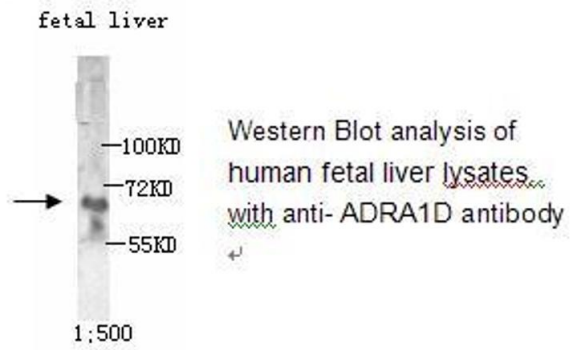


Image 1.