

Datasheet for ABIN790922  
**anti-PLA2G12B antibody (N-Term)**



[Go to Product page](#)

1 Image

### Overview

Quantity:	100 µL
Target:	PLA2G12B
Binding Specificity:	N-Term
Reactivity:	Human, Mouse, Rat
Host:	Rabbit
Clonality:	Polyclonal
Conjugate:	This PLA2G12B antibody is un-conjugated
Application:	ELISA, Western Blotting (WB)

### Product Details

Immunogen:	15 amino acid peptide from near the N terminal residues of human PLA2G12B protein
	Type of Immunogen: Synthetic peptide
Isotype:	IgG
Purification:	Purified

### Target Details

Target:	PLA2G12B
Alternative Name:	PLA2G12B ( <a href="#">PLA2G12B Products</a> )
Background:	Name/Gene ID: PLA2G12B Family: Phospholipase

## Target Details

---

Synonyms: PLA2G12B, GXIII sPLA2, Phospholipase A2, group XIII, SPLA2-GXIIB, FKSG71, GXIIB, GXIII sPLA2-like, Phospholipase A2, group XIIB, PLA2G13

Gene ID: 84647

UniProt: [Q9BX93](#)

## Application Details

---

Application Notes: Approved: ELISA (1:80000), WB (1:200 - 1:500)

Comment: Target Species of Antibody: Human

Restrictions: For Research Use only

## Handling

---

Format: Liquid

Concentration: Lot specific

Buffer: PBS (without Mg<sup>2+</sup>, Ca<sup>2+</sup>), pH 7.4, 150 mM sodium chloride, 0.02 % sodium azide, 50 % glycerol

Preservative: Sodium azide

Precaution of Use: This product contains Sodium azide: a POISONOUS AND HAZARDOUS SUBSTANCE which should be handled by trained staff only.

Storage: -20 °C

Storage Comment: Store at -20°C for up to 1 year.

Expiry Date: 12 months

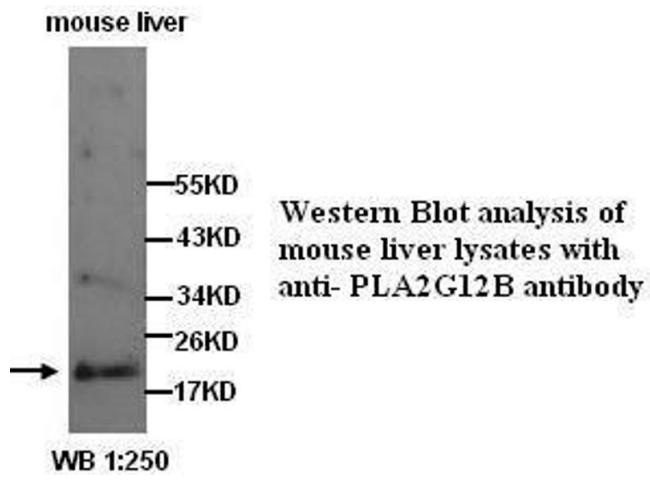


Image 1.