



[Go to Product page](#)

Datasheet for ABIN791068

## anti-ADPRHL2 antibody (C-Term)

### 1 Image

#### Overview

Quantity:	100 µL
Target:	ADPRHL2
Binding Specificity:	C-Term
Reactivity:	Human
Host:	Rabbit
Clonality:	Polyclonal
Conjugate:	This ADPRHL2 antibody is un-conjugated
Application:	ELISA, Immunohistochemistry (IHC)

#### Product Details

Immunogen:	A peptide near the C terminal residues of human ARH3 protein
	Type of Immunogen: Synthetic peptide
Isotype:	IgG
Purification:	Affinity purified

#### Target Details

Target:	ADPRHL2
Alternative Name:	ADPRHL2 ( <a href="#">ADPRHL2 Products</a> )
Background:	Name/Gene ID: ADPRHL2

## Target Details

Synonyms: ADPRHL2, ADP-ribosylhydrolase like 2, ARH3, ADP-ribosylhydrolase 3

Gene ID: 54936

UniProt: [Q9NX46](#)

## Application Details

Application Notes: Approved: ELISA (1:5000 - 1:20000), IHC (1:100 - 1:500)

Comment: Target Species of Antibody: Human

Restrictions: For Research Use only

## Handling

Format: Liquid

Concentration: Lot specific

Buffer: PBS, pH 7.4, 0.02 % sodium azide

Preservative: Sodium azide

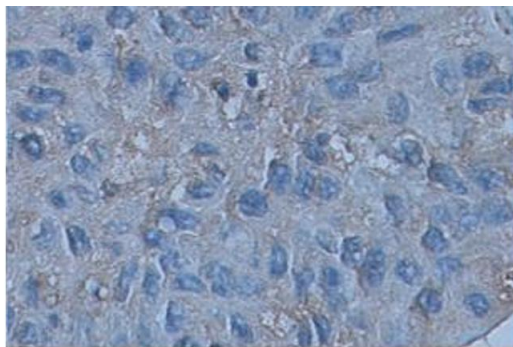
Precaution of Use: This product contains Sodium azide: a POISONOUS AND HAZARDOUS SUBSTANCE which should be handled by trained staff only.

Storage: -20 °C

Storage Comment: Store at -20°C for up to 1 year.

Expiry Date: 12 months

## Images



**Immunohistochemical staining of formalin-fixed paraffin-embedded hepatocarcinoma showing cytoplasmic staining with anti-ARH3 antibody dilution: 1:100.**

**Image 1.**