

Datasheet for ABIN791223  
**anti-NPSR1 antibody (AA 241-300)**



[Go to Product page](#)

2 Images

### Overview

Quantity:	100 µL
Target:	NPSR1
Binding Specificity:	AA 241-300
Reactivity:	Human
Host:	Rabbit
Clonality:	Polyclonal
Conjugate:	This NPSR1 antibody is un-conjugated
Application:	Western Blotting (WB), Immunohistochemistry (IHC)

### Product Details

Immunogen:	Peptide
	Type of Immunogen: Synthetic peptide
Isotype:	IgG
Purification:	Affinity purified

### Target Details

Target:	NPSR1
Alternative Name:	NPSR1 / NPSR / GPR154 ( <a href="#">NPSR1 Products</a> )
Background:	Name/Gene ID: NPSR1
	Subfamily: Vasopressin/oxytocin

## Target Details

---

Family: GPCR

Synonyms: NPSR1, ASRT2, G protein-coupled receptor 154, G-protein coupled receptor 154, GPR154, Neuropeptide S receptor 1, NPSR, PGR14, GPRA, Neuropeptide S receptor, VRR1

Gene ID: 387129

UniProt: [Q6W5P4](#)

## Application Details

---

Application Notes: Optimal working dilution should be determined by the investigator.

Comment: Target Species of Antibody: Human

Restrictions: For Research Use only

## Handling

---

Format: Liquid

Concentration: Lot specific

Buffer: PBS, pH 7.4, 0.02 % sodium azide

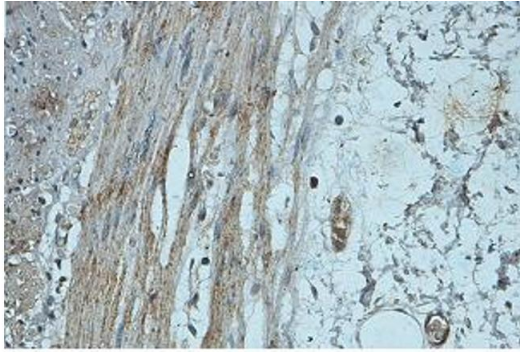
Preservative: Sodium azide

Precaution of Use: This product contains Sodium azide: a POISONOUS AND HAZARDOUS SUBSTANCE which should be handled by trained staff only.

Handling Advice: Avoid repeat freeze-thaw cycles.

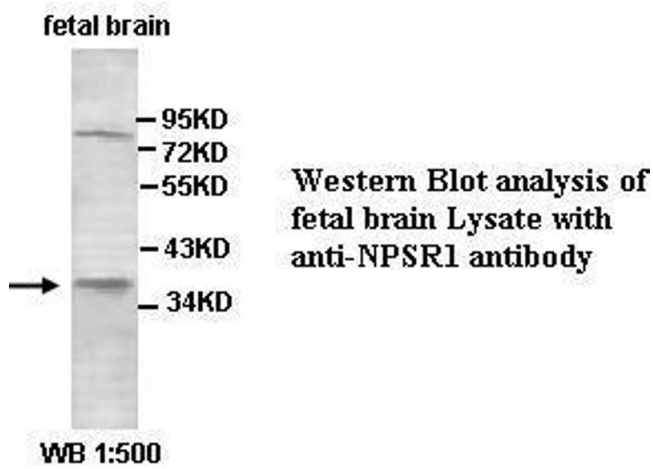
Storage: 4 °C,-20 °C

Storage Comment: Short term: 4°C. Long term: Store at -20°C. Avoid freeze-thaw cycles.



Immunohistochemical staining of formalin-fixed paraffin-embedded fetal small intestine showing membrane staining with anti-NPSR1 antibody at a dilution of 1/100.

Image 1.



Western Blot analysis of fetal brain Lysate with anti-NPSR1 antibody

Image 2.