

Datasheet for ABIN791520

**anti-ALDOB antibody****1** Image[Go to Product page](#)

## Overview

|              |                                      |
|--------------|--------------------------------------|
| Quantity:    | 100 µL                               |
| Target:      | ALDOB                                |
| Reactivity:  | Human                                |
| Host:        | Mouse                                |
| Clonality:   | Monoclonal                           |
| Conjugate:   | This ALDOB antibody is un-conjugated |
| Application: | Western Blotting (WB), ELISA         |

## Product Details

|               |  |
|---------------|--|
| Immunogen:    | Recombinant protein corresponding to full length ALDOB<br>Type of Immunogen: Recombinant protein |
| Isotype:      | IgG1   |
| Specificity:  | Anti-ALDOB recognizes recombinant protein ALDOB.   |
| Purification: | Affinity purified  |

## Target Details

|                   |  |
|-------------------|--|
| Target:           | ALDOB                                    |
| Alternative Name: | ALDOB ( <a href="#">ALDOB Products</a> ) |
| Background:       | Name/Gene ID: ALDOB                      |

## Target Details

Synonyms: ALDOB, ALDB, ALDO2, Liver-type aldolase, Aldolase 2

Gene ID: 229

UniProt: [P05062](#)

## Application Details

Application Notes: Approved: ELISA, WB (1:1000)

Comment: Target Species of Antibody: Human

Restrictions: For Research Use only

## Handling

Format: Liquid

Concentration: Lot specific

Buffer: Citrate-Tris-HCl buffer, pH 7.0, 0.02 % Proclin 300

Preservative: ProClin

Precaution of Use: This product contains ProClin: a POISONOUS AND HAZARDOUS SUBSTANCE which should be handled by trained staff only.

Storage: -20 °C

Storage Comment: Store at -20°C for up to 1 year.

Expiry Date: 12 months

## Images

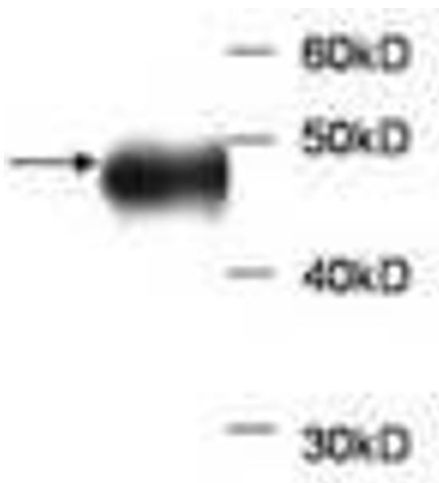


Image 1.