

Datasheet for ABIN791523  
**anti-Cathepsin H antibody**



[Go to Product page](#)

1 Image

## Overview

Quantity:	100 µL
Target:	Cathepsin H (CTSH)
Reactivity:	Human
Host:	Mouse
Clonality:	Monoclonal
Conjugate:	This Cathepsin H antibody is un-conjugated
Application:	Western Blotting (WB), ELISA

## Product Details

Immunogen:	Recombinant protein corresponding to full length CTSH Type of Immunogen: Recombinant protein
Isotype:	IgG1
Specificity:	Anti-CTSH recognizes recombinant protein CTSH
Purification:	Affinity purified

## Target Details

Target:	Cathepsin H (CTSH)
Alternative Name:	CTSH / Cathepsin H ( <a href="#">CTSH Products</a> )
Background:	Name/Gene ID: CTSH Subfamily: Cysteine C1

## Target Details

---

Family: Protease

Synonyms: CTSH, Aleurain, Cathepsin B3, Cathepsin BA, Cathepsin H, CPSB, ACC-4, ACC-5, Minichain, Pro-cathepsin H

---

Gene ID: 1512

---

UniProt: [P09668](#)

---

Pathways: [Positive Regulation of Endopeptidase Activity](#)

## Application Details

---

Application Notes: Approved: ELISA, WB (1:1000)

---

Comment: Target Species of Antibody: Human

---

Restrictions: For Research Use only

## Handling

---

Format: Liquid

---

Concentration: Lot specific

---

Buffer: Citrate-Tris-HCl buffer, pH 7.0, 0.02 % Proclin 300

---

Preservative: ProClin

---

Precaution of Use: This product contains ProClin: a POISONOUS AND HAZARDOUS SUBSTANCE which should be handled by trained staff only.

---

Storage: -20 °C

---

Storage Comment: Store at -20°C for up to 1 year.

---

Expiry Date: 12 months

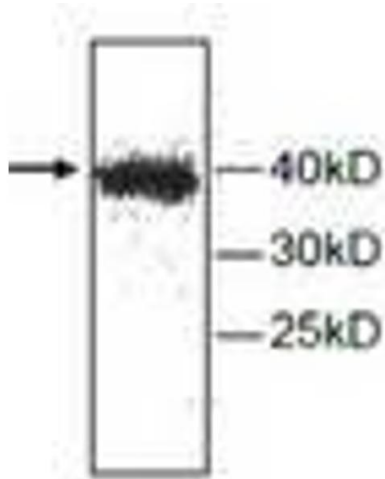


Image 1.