

Datasheet for ABIN791537

anti-RPSA/Laminin Receptor antibody[Go to Product page](#)**1** Image

Overview

Quantity:	100 µL
Target:	RPSA/Laminin Receptor (RPSA)
Reactivity:	Human
Host:	Mouse
Clonality:	Monoclonal
Conjugate:	This RPSA/Laminin Receptor antibody is un-conjugated
Application:	Western Blotting (WB), ELISA

Product Details

Immunogen:	Recombinant protein corresponding to full length LR Type of Immunogen: Recombinant protein
Isotype:	IgG1
Specificity:	Anti-LR recognizes LR expression in Hela whole cell lysate.
Purification:	Affinity purified

Target Details

Target:	RPSA/Laminin Receptor (RPSA)
Alternative Name:	RPSA / Laminin Receptor (RPSA Products)
Background:	Name/Gene ID: RPSA Family: Laminin

Target Details

Synonyms: RPSA, 37 kDa laminin receptor, 37LRP, 40S ribosomal protein SA, 67LR, 67 kDa laminin receptor, 37/67 kDa laminin receptor, 67kD, ribosomal protein SA, LAMR1, LAMBR, Laminin receptor 1, LamR, NEM/1CHD4, SA, LRP/LR, Laminin binding protein, Laminin Receptor, LRP, p40, Ribosomal protein SA

Gene ID: 3921

UniProt: [P08865](#)

Pathways: [Ribonucleoprotein Complex Subunit Organization](#), [Ribosome Assembly](#)

Application Details

Application Notes: Approved: ELISA, WB (1:1000)

Comment: Target Species of Antibody: Human

Restrictions: For Research Use only

Handling

Format: Liquid

Concentration: Lot specific

Buffer: Citrate-Tris-HCl buffer, pH 7.0, 0.02 % Proclin 300

Preservative: ProClin

Precaution of Use: This product contains ProClin: a POISONOUS AND HAZARDOUS SUBSTANCE which should be handled by trained staff only.

Storage: -20 °C

Storage Comment: Store at -20°C for up to 1 year.

Expiry Date: 12 months

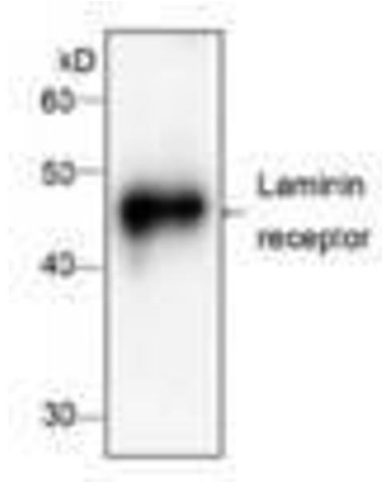


Image 1.