

Datasheet for ABIN791540

anti-MDH1 antibody**1** Image[Go to Product page](#)

Overview

Quantity:	100 µL
Target:	MDH1
Reactivity:	Human
Host:	Mouse
Clonality:	Monoclonal
Conjugate:	This MDH1 antibody is un-conjugated
Application:	Western Blotting (WB), ELISA

Product Details

Immunogen:	Recombinant protein corresponding to full length MDH1
	Type of Immunogen: Recombinant protein
Isotype:	IgG1
Specificity:	Anti-MDH1 recognizes recombinant protein MDH1.
Purification:	Affinity purified

Target Details

Target:	MDH1
Alternative Name:	MDH1 (MDH1 Products)
Background:	Name/Gene ID: MDH1

Target Details

Synonyms: MDH1, Cytosolic malate dehydrogenase, Diiodophenylpyruvate reductase, MOR2, MDH-s, MDHA, MGC:1375, Soluble malate dehydrogenase

Gene ID: 4190

UniProt: [P40925](#)

Application Details

Application Notes: Approved: ELISA, WB (1:1000)

Comment: Target Species of Antibody: Human

Restrictions: For Research Use only

Handling

Format: Liquid

Concentration: Lot specific

Buffer: Citrate-Tris-HCl buffer, pH 7.0, 0.02 % Proclin 300

Preservative: ProClin

Precaution of Use: This product contains ProClin: a POISONOUS AND HAZARDOUS SUBSTANCE which should be handled by trained staff only.

Storage: -20 °C

Storage Comment: Store at -20°C for up to 1 year.

Expiry Date: 12 months

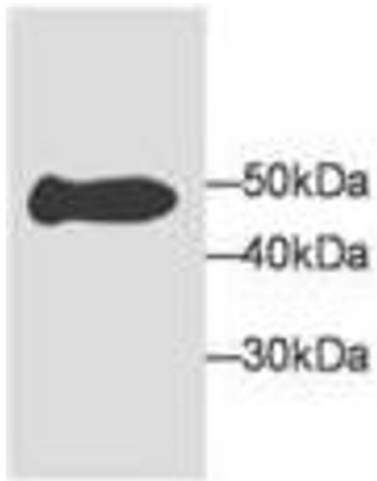


Image 1.