

Datasheet for ABIN791562
anti-CXCL1 antibody (AA 36-107)



[Go to Product page](#)

1 Image

Overview

Quantity:	100 µL
Target:	CXCL1
Binding Specificity:	AA 36-107
Reactivity:	Human
Host:	Mouse
Clonality:	Monoclonal
Conjugate:	This CXCL1 antibody is un-conjugated
Application:	Western Blotting (WB), ELISA

Product Details

Immunogen:	Recombinant protein corresponding to fragment (amino acids 36-107) CXCL1 Type of Immunogen: Recombinant protein
Isotype:	IgG1
Specificity:	Anti-CXCL1 recognizes recombinant protein CXCL1.
Purification:	Affinity purified

Target Details

Target:	CXCL1
Alternative Name:	GRO / CXCL1 (CXCL1 Products)

Target Details

Background: Name/Gene ID: CXCL1
Subfamily: Interocrine alpha
Family: Interocrine

Synonyms: CXCL1, C-X-C motif chemokine 1, Fibroblast secretory protein, FSP, GRO1, GROa, Growth-regulated alpha protein, GRO-alpha(1-73), MGSA, MGSA-a, Small inducible cytokine b1, GRO, MGSA alpha, NAP-3, SCYB1

Gene ID: 2919

UniProt: [P09341](#)

Pathways: [Autophagy](#)

Application Details

Application Notes: Approved: ELISA, WB (1:1000)

Comment: Target Species of Antibody: Human

Restrictions: For Research Use only

Handling

Format: Liquid

Concentration: Lot specific

Buffer: Citrate-Tris-HCl buffer, pH 7.0, 0.02 % Proclin 300

Preservative: ProClin

Precaution of Use: This product contains ProClin: a POISONOUS AND HAZARDOUS SUBSTANCE which should be handled by trained staff only.

Storage: -20 °C

Storage Comment: Store at -20°C for up to 1 year.

Expiry Date: 12 months

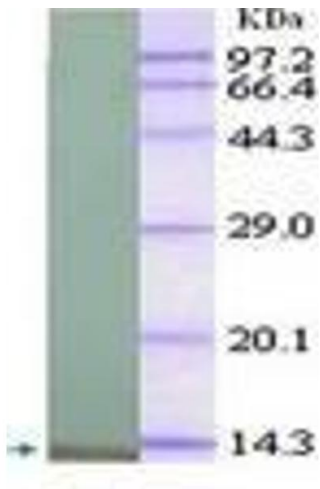


Image 1.