



Datasheet for ABIN791563  
**anti-CXCL10 antibody**



[Go to Product page](#)

2 Images

Overview

Quantity:	100 µL
Target:	CXCL10
Reactivity:	Human
Host:	Mouse
Clonality:	Monoclonal
Conjugate:	This CXCL10 antibody is un-conjugated
Application:	Western Blotting (WB), ELISA, Immunohistochemistry (IHC)

Product Details

Immunogen:	Recombinant protein corresponding to full length CXCL10 Type of Immunogen: Recombinant protein
Clone:	1
Isotype:	IgG1
Specificity:	Anti-CXCL10 recognizes recombinant protein CXCL10.
Purification:	Affinity purified

Target Details

Target:	CXCL10
Alternative Name:	IP-10 / CXCL10 ( <a href="#">CXCL10 Products</a> )

## Target Details

---

Background: Name/Gene ID: CXCL10  
Subfamily: Intercline alpha  
Family: Intercline  
  
Synonyms: CXCL10, C-X-C motif chemokine 10, Gamma-IP10, IP-10, Gamma IP10, GIP-10, Mob-1, Small-inducible cytokine B10, Crg-2, IFI10, INP10, SCYB10

---

Gene ID: 3627

---

UniProt: [P02778](#)

---

## Application Details

---

Application Notes: Approved: ELISA, IHC (1:10), WB (1:1000)

---

Comment: Target Species of Antibody: Human

---

Restrictions: For Research Use only

---

## Handling

---

Format: Liquid

---

Concentration: Lot specific

---

Buffer: Citrate-Tris-HCl buffer, pH 7.0, 0.02 % Proclin 300

---

Preservative: ProClin

---

Precaution of Use: This product contains ProClin: a POISONOUS AND HAZARDOUS SUBSTANCE which should be handled by trained staff only.

---

Storage: -20 °C

---

Storage Comment: Store at -20°C for up to 1 year.

---

Expiry Date: 12 months

---

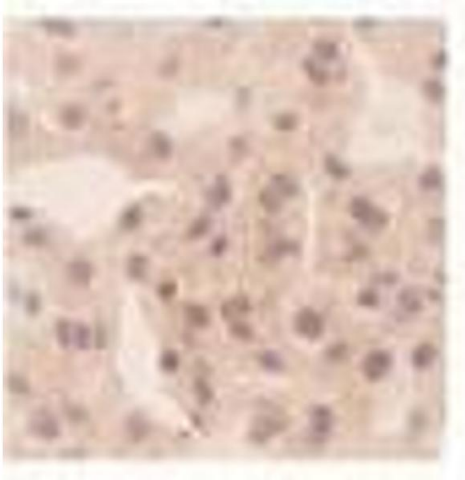


Image 1.

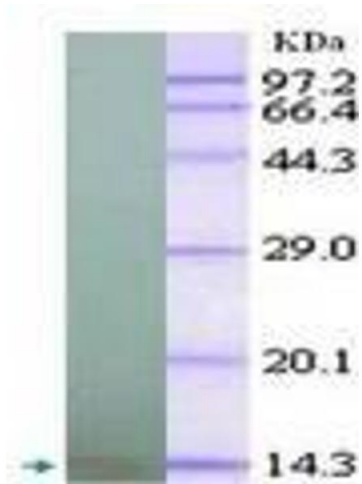


Image 2.