



[Go to Product page](#)

Datasheet for ABIN793601

anti-Luciferase antibody (N-Term)

1 Image

Overview

Quantity:	100 µg
Target:	Luciferase
Binding Specificity:	N-Term
Reactivity:	Photinus pyralis
Host:	Mouse
Clonality:	Monoclonal
Conjugate:	This Luciferase antibody is un-conjugated
Application:	Western Blotting (WB), Immunohistochemistry (IHC)

Product Details

Immunogen:	Luciferase protein isolated from Photinus pyralis.
Clone:	Luci17
Isotype:	IgG1
Specificity:	Firefly Luciferase
Purification:	Protein A/G purified

Target Details

Target:	Luciferase
Alternative Name:	Firefly Luciferase (Luciferase Products)
Background:	Synonyms: Firefly Luciferase, PPLUC

Application Details

Application Notes:	Approved: IHC, WB
	Usage: Detects luciferase protein by Western blot in <i>C. elegans</i> and <i>Drosophila melanogaster</i> tissues, human fibroblast, mouse macrophage, kidney, liver and cortex as well as NIH3T3, Jurkat and BHR21 cell lines. Detects luciferase with little to no background signal. Optimal concentration should be evaluated by serial dilutions.
Comment:	Target Species of Antibody: <i>Photinus pyralis</i>
Restrictions:	For Research Use only

Handling

Format:	Liquid
Concentration:	Lot specific
Buffer:	PBS, 0.08 % Sodium Azide
Preservative:	Sodium azide
Precaution of Use:	This product contains Sodium azide: a POISONOUS AND HAZARDOUS SUBSTANCE which should be handled by trained staff only.
Handling Advice:	Aliquot to Avoid freeze/thaw cycles.
Storage:	-20 °C
Storage Comment:	Store at -20°C. Aliquot to avoid freeze/thaw cycles.

Images

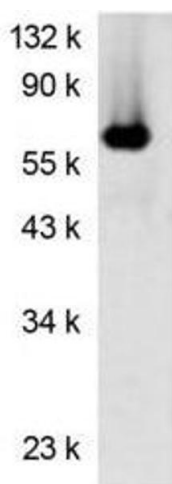


Image 1.