



[Go to Product page](#)

Datasheet for ABIN793734
anti-ADIRF antibody (C-Term)

1 Image

Overview

Quantity:	100 µg
Target:	ADIRF
Binding Specificity:	C-Term
Reactivity:	Human
Host:	Rabbit
Clonality:	Polyclonal
Conjugate:	This ADIRF antibody is un-conjugated
Application:	Western Blotting (WB), Immunohistochemistry (IHC)

Product Details

Immunogen:	Synthetic peptide derived from human APM2 protein. Type of Immunogen: Synthetic peptide
Isotype:	IgG
Specificity:	Human APM2
Purification:	Immunoaffinity purified

Target Details

Target:	ADIRF
Alternative Name:	ADIRF / C10orf116 (ADIRF Products)

Target Details

Background:	Name/Gene ID: ADIRF Synonyms: ADIRF, Adipose specific 2, ApM-2, APM2, C10orf116, RP11-96C23.4
Gene ID:	10974
Pathways:	Positive Regulation of fat Cell Differentiation

Application Details

Application Notes:	Approved: IHC, WB Usage: Antibody can be used for Western blotting (1:400 starting dilution). Optimal concentration should be evaluated by serial dilutions.
Comment:	Target Species of Antibody: Human
Restrictions:	For Research Use only

Handling

Format:	Liquid
Concentration:	Lot specific
Buffer:	PBS, 0.08 % Sodium Azide
Preservative:	Sodium azide
Precaution of Use:	This product contains Sodium azide: a POISONOUS AND HAZARDOUS SUBSTANCE which should be handled by trained staff only.
Handling Advice:	Aliquot to Avoid freeze/thaw cycles.
Storage:	-20 °C
Storage Comment:	Store at -20°C. Aliquot to avoid freeze/thaw cycles.

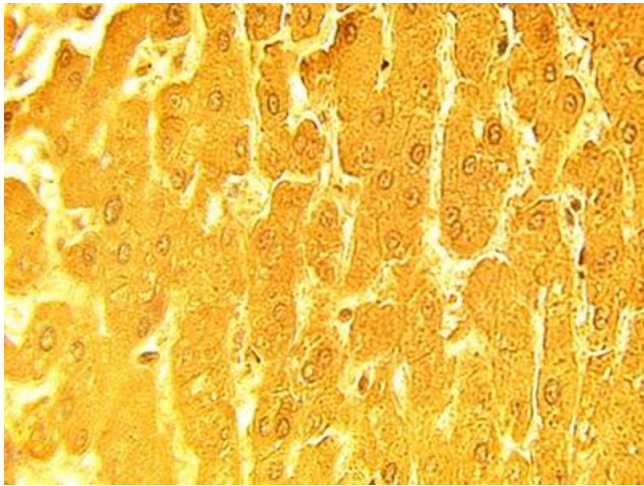


Image 1.