

Datasheet for ABIN800628
anti-ERBB3 antibody (pTyr1328)

3 Images

[Go to Product page](#)

Overview

Quantity:	100 µL
Target:	ERBB3
Binding Specificity:	pTyr1328
Reactivity:	Human, Rat
Host:	Rabbit
Clonality:	Polyclonal
Conjugate:	This ERBB3 antibody is un-conjugated
Application:	Western Blotting (WB), ELISA, Immunohistochemistry (Paraffin-embedded Sections) (IHC (p)), Immunofluorescence (Paraffin-embedded Sections) (IF (p)), Immunofluorescence (Cultured Cells) (IF (cc)), Immunohistochemistry (Frozen Sections) (IHC (fro))

Product Details

Immunogen:	KLH conjugated synthetic phosphopeptide derived from human HER3 around the phosphorylation site of Tyr1328 [PD(p-Y)WH]
Isotype:	IgG
Cross-Reactivity:	Human, Rat
Predicted Reactivity:	Mouse,Dog,Pig,Horse,Chicken,Rabbit
Purification:	Purified by Protein A.

Target Details

Target:	ERBB3
---------	-------

Target Details

Alternative Name:	HER3 (ERBB3 Products)
Background:	<p>Synonyms: HER3, LCCS2, ErbB-3, c-erbB3, erbB3-S, MDA-BF-1, c-erbB-3, p180-ErbB3, p45-sErbB3, p85-sErbB3, Receptor tyrosine-protein kinase erbB-3, Proto-oncogene-like protein c-ErbB-3, Tyrosine kinase-type cell surface receptor HER3, ERBB3</p> <p>Background: ErbB3 is a member of the epidermal growth factor receptor (EGFR) family of receptor tyrosine kinases. ErbB3 is a membrane-bound protein which has a neuregulin binding domain but not an active kinase domain. It can therefore bind this ligand but cannot convey a signal into the cell via protein phosphorylation. However it does form heterodimers with other EGF receptor family members which do have kinase activity. Heterodimerization leads to the activation of pathways which lead to cell proliferation or differentiation. Amplification of this gene and/or overexpression of its protein have been reported in numerous cancers including prostate, bladder and breast tumors. Alternate transcriptional splice variants encoding different isoforms have been characterized. Isoform 2 lacks the intermembrane region and is secreted outside the cell. This form acts to modulate the activity of the membrane-bound form. Additional splice variants have also been reported but they have not been thoroughly characterized. Defects in ERBB3 are the cause of lethal congenital contracture syndrome type 2 (LCCS2), also called Israeli Bedouin multiple contracture syndrome type A. LCCS2 is an autosomal recessive neurogenic form of a neonatally lethal arthrogryposis that is associated with atrophy of the anterior horn of the spinal cord.</p>
Gene ID:	2065
UniProt:	P21860
Pathways:	RTK Signaling , Fc-epsilon Receptor Signaling Pathway , EGFR Signaling Pathway , Neurotrophin Signaling Pathway

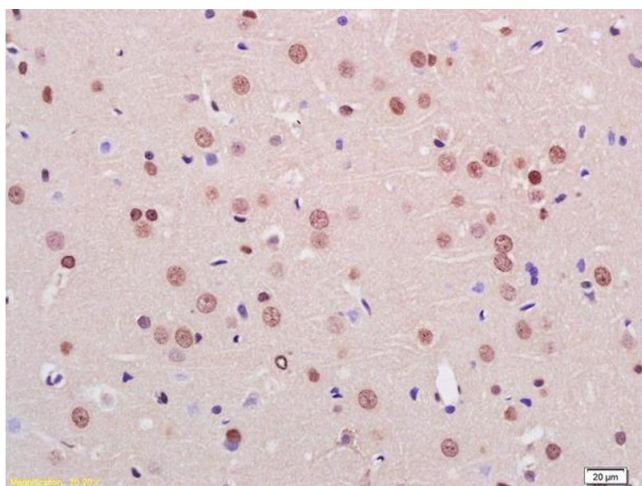
Application Details

Application Notes:	WB 1:300-5000 ELISA 1:500-1000 IHC-P 1:200-400 IHC-F 1:100-500 IF(IHC-P) 1:50-200 IF(IHC-F) 1:50-200 IF(ICC) 1:50-200
Restrictions:	For Research Use only

Handling

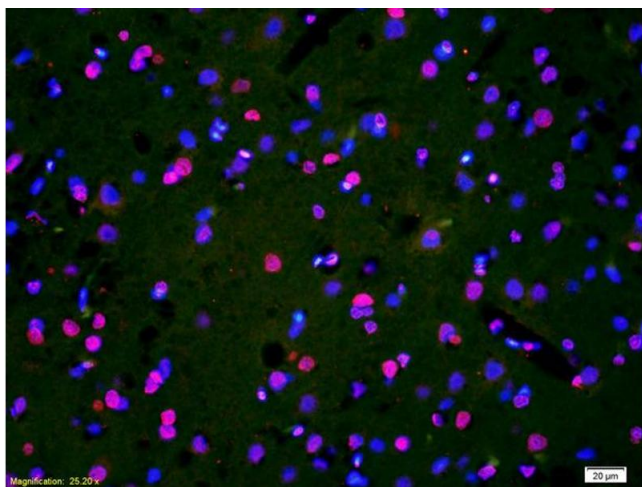
Format:	Liquid
Concentration:	1 µg/µL
Buffer:	0.01M TBS(pH 7.4) with 1 % BSA, 0.02 % Proclin300 and 50 % Glycerol.
Preservative:	ProClin
Precaution of Use:	This product contains ProClin: a POISONOUS AND HAZARDOUS SUBSTANCE, which should be handled by trained staff only.
Storage:	4 °C,-20 °C
Storage Comment:	Shipped at 4°C. Store at -20°C for one year. Avoid repeated freeze/thaw cycles.
Expiry Date:	12 months

Images



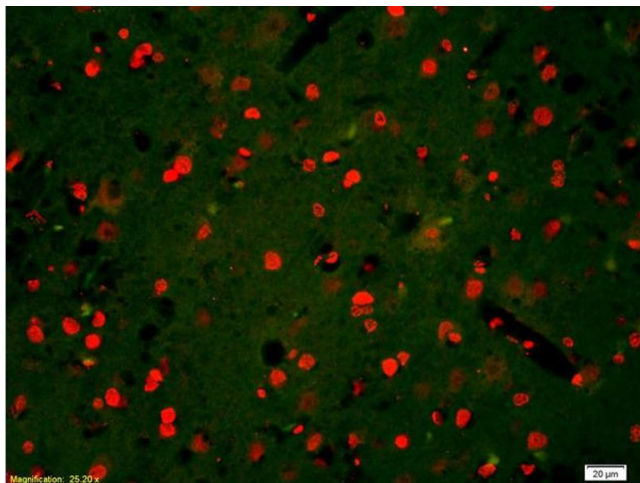
Immunohistochemistry

Image 1. Formalin-fixed and paraffin embedded rat brain labeled with Rabbit Anti Phospho-HER3(Tyr1328) Polyclonal Antibody, Unconjugated (ABIN800628) at 1:200 followed by conjugation to the secondary antibody and DAB staining



Immunofluorescence

Image 2. Formalin-fixed and paraffin-embedded rat brain labeled with Anti-Phospho-HER3(Tyr1328) Polyclonal Antibody, Unconjugated (ABIN800628) 1:200, overnight at 4°C, The secondary antibody was Goat Anti-Rabbit IgG, Cy3 conjugated used at 1:200 dilution for 40 minutes at 37°C.



Immunofluorescence

Image 3. Formalin-fixed and paraffin-embedded rat brain labeled with Anti-Phospho-HER3(Tyr1328) Polyclonal Antibody, Unconjugated (ABIN800628) 1:200, overnight at 4°C, The secondary antibody was Goat Anti-Rabbit IgG, Cy3 conjugated used at 1:200 dilution for 40 minutes at 37°C.