

Datasheet for ABIN801393
anti-HOMER3 antibody (pThr36)

2 Images

[Go to Product page](#)

Overview

Quantity:	100 µL
Target:	HOMER3
Binding Specificity:	pThr36
Reactivity:	Human, Mouse
Host:	Rabbit
Clonality:	Polyclonal
Conjugate:	This HOMER3 antibody is un-conjugated
Application:	Western Blotting (WB), ELISA, Immunofluorescence (Cultured Cells) (IF (cc)), Immunofluorescence (Paraffin-embedded Sections) (IF (p)), Immunohistochemistry (Paraffin-embedded Sections) (IHC (p)), Immunohistochemistry (Frozen Sections) (IHC (fro))

Product Details

Immunogen:	KLH conjugated synthetic phosphopeptide derived from human HOMER3 around the phosphorylation site of Thr36 [AL(p-T)VS]
Isotype:	IgG
Cross-Reactivity:	Human, Mouse
Predicted Reactivity:	Rat,Dog,Chicken
Purification:	Purified by Protein A.

Target Details

Target:	HOMER3
---------	--------

Target Details

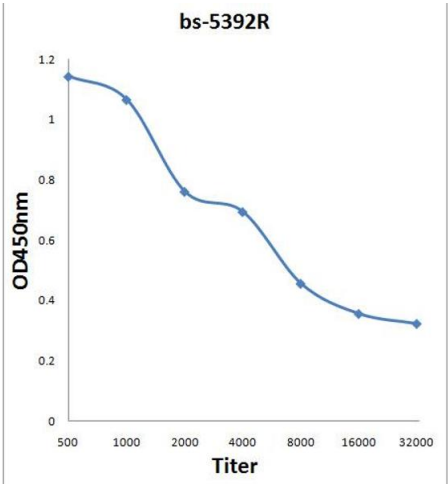
Alternative Name:	HOMER3 (HOMER3 Products)
Background:	<p>Synonyms: VESL3, HOMER-3, Homer protein homolog 3, HOMER3</p> <p>Background: Postsynaptic density scaffolding protein. Binds and cross-links cytoplasmic regions of GRM1, GRM5, ITPR1, DNM3, RYR1, RYR2, SHANK1 and SHANK3. By physically linking GRM1 and GRM5 with ER-associated ITPR1 receptors, it aids the coupling of surface receptors to intracellular calcium release. Isoforms can be differently regulated and may play an important role in maintaining the plasticity at glutamatergic synapses.</p>
Gene ID:	9454
UniProt:	Q9NSC5

Application Details

Application Notes:	<p>WB 1:300-5000</p> <p>ELISA 1:500-1000</p> <p>IHC-P 1:200-400</p> <p>IHC-F 1:100-500</p> <p>IF(IHC-P) 1:50-200</p> <p>IF(IHC-F) 1:50-200</p> <p>IF(ICC) 1:50-200</p>
Restrictions:	For Research Use only

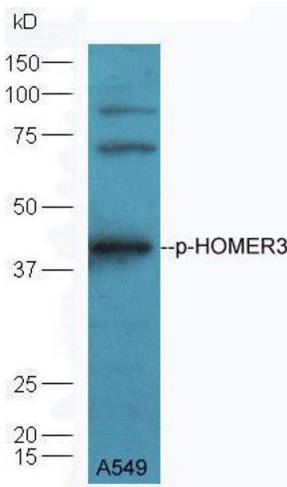
Handling

Format:	Liquid
Concentration:	1 µg/µL
Buffer:	0.01M TBS(pH 7.4) with 1 % BSA, 0.02 % Proclin300 and 50 % Glycerol.
Preservative:	ProClin
Precaution of Use:	This product contains ProClin: a POISONOUS AND HAZARDOUS SUBSTANCE, which should be handled by trained staff only.
Storage:	4 °C,-20 °C
Storage Comment:	Shipped at 4°C. Store at -20°C for one year. Avoid repeated freeze/thaw cycles.
Expiry Date:	12 months



ELISA

Image 1. Antigen: 0.2 µg 100 µL Primary: Antiserum, 1:500, 1:1000, 1:2000, 1:4000, 1:8000, 1:16000, 1:32000, Secondary: HRP conjugated Goat-Anti-Rabbit IgG (ABIN727474-HRP) at 1:5000, TMB (C-0024) staining, Read the data in MicroplateReader by 450



Western Blotting

Image 2. A549 lysate probed with Rabbit Anti-HOMER3 (Thr36) Polyclonal Antibody at 1:5000 90min in 37°C.