

Datasheet for ABIN801648
anti-LRP1 antibody (pSer4523)

2 Images

[Go to Product page](#)

Overview

Quantity:	100 µL
Target:	LRP1
Binding Specificity:	pSer4523
Reactivity:	Human, Rat
Host:	Rabbit
Clonality:	Polyclonal
Conjugate:	This LRP1 antibody is un-conjugated
Application:	ELISA, Flow Cytometry (FACS), Immunohistochemistry (Paraffin-embedded Sections) (IHC (p)), Immunohistochemistry (Frozen Sections) (IHC (fro)), Immunofluorescence (Cultured Cells) (IF (cc)), Immunofluorescence (Paraffin-embedded Sections) (IF (p))

Product Details

Immunogen:	KLH conjugated synthetic phosphopeptide derived from human LRP1 around the phosphorylation site of Ser4523
Isotype:	IgG
Specificity:	This is the corresponding phosphorylation site in the following species: mouse ser(4524) rat ser(4524)
Cross-Reactivity:	Human, Rat
Predicted Reactivity:	Mouse
Purification:	Purified by Protein A.

Target Details

Target:	LRP1
Alternative Name:	LRP1 (LRP1 Products)
Background:	<p>Synonyms: APR, LRP, A2MR, CD91, APOER, LRP1A, TGFBR5, IGFBP3R, Prolow-density lipoprotein receptor-related protein 1, LRP-1, Alpha-2-macroglobulin receptor, Apolipoprotein E receptor, LRP1</p> <p>Background: Endocytic receptor involved in endocytosis and in phagocytosis of apoptotic cells. Required for early embryonic development. Involved in cellular lipid homeostasis. Involved in the plasma clearance of chylomicron remnants and activated LRPAP1 (alpha 2-macroglobulin), as well as the local metabolism of complexes between plasminogen activators and their endogenous inhibitors. May modulate cellular events, such as APP metabolism, kinase-dependent intracellular signaling, neuronal calcium signaling as well as neurotransmission. Functions as a receptor for Pseudomonas aeruginosa exotoxin A.</p>
Gene ID:	4035
UniProt:	Q07954
Pathways:	Smooth Muscle Cell Migration , Platelet-derived growth Factor Receptor Signaling

Application Details

Application Notes:	ELISA 1:500-1000 FCM 1:20-100 IHC-P 1:200-400 IHC-F 1:100-500 IF(IHC-P) 1:50-200 IF(IHC-F) 1:50-200 IF(ICC) 1:50-200
Restrictions:	For Research Use only

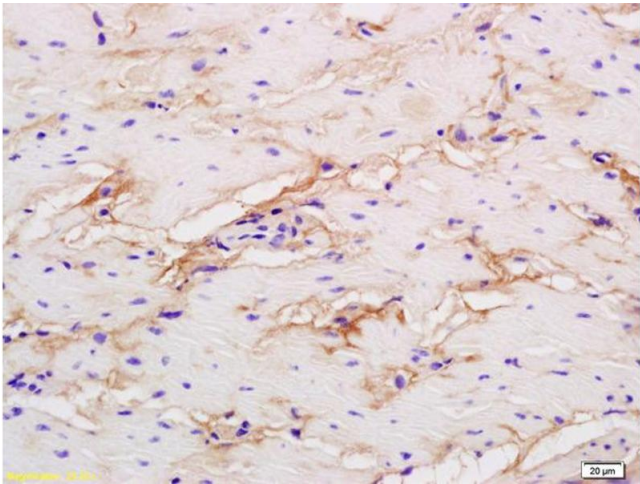
Handling

Format:	Liquid
Concentration:	1 µg/µL
Buffer:	0.01M TBS(pH 7.4) with 1 % BSA, 0.02 % Proclin300 and 50 % Glycerol.
Preservative:	ProClin

Handling

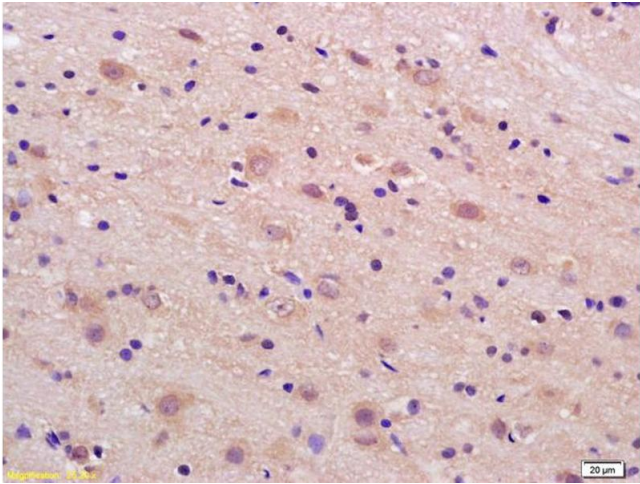
Precaution of Use:	This product contains ProClin: a POISONOUS AND HAZARDOUS SUBSTANCE, which should be handled by trained staff only.
Storage:	4 °C,-20 °C
Storage Comment:	Shipped at 4°C. Store at -20°C for one year. Avoid repeated freeze/thaw cycles.
Expiry Date:	12 months

Images



Immunohistochemistry

Image 1. Formalin-fixed and paraffin embedded human colon labeled with Rabbit Anti phospho-LRP1(Ser4523) Polyclonal Antibody, Unconjugated (ABIN801648) at 1:200 followed by conjugation to the secondary antibody and DAB staining



Immunohistochemistry

Image 2. Formalin-fixed and paraffin embedded rat brain labeled with Rabbit Anti phospho-LRP1(Ser4523) Polyclonal Antibody, Unconjugated (ABIN801648) at 1:200 followed by conjugation to the secondary antibody and DAB staining