

Datasheet for ABIN802473  
**anti-JunD antibody (pSer255)**[Go to Product page](#)

## 3 Images

## Overview

Quantity:	100 µL
Target:	JunD (JUND)
Binding Specificity:	pSer255
Reactivity:	Human
Host:	Rabbit
Clonality:	Polyclonal
Conjugate:	This JunD antibody is un-conjugated
Application:	Western Blotting (WB), ELISA, Immunofluorescence (Cultured Cells) (IF (cc)), Immunofluorescence (Paraffin-embedded Sections) (IF (p)), Immunohistochemistry (Paraffin-embedded Sections) (IHC (p)), Immunocytochemistry (ICC), Immunohistochemistry (Frozen Sections) (IHC (fro))

## Product Details

Immunogen:	KLH conjugated synthetic phosphopeptide derived from human JunD around the phosphorylation site of Ser255
Isotype:	IgG
Cross-Reactivity:	Human
Predicted Reactivity:	Dog,Cow,Chicken
Purification:	Purified by Protein A.

## Target Details

Target:	JunD (JUND)
Alternative Name:	Jund ( <a href="#">JUND Products</a> )
Background:	<p>Synonyms: AP-1, Transcription factor jun-D, JUND</p> <p>Background: The cJun proto-oncogene was first identified as the cellular homolog of the avian sarcoma virus vjun oncogene. JunB and JunD have been shown to be almost identical to cJun in their C terminal regions, which are involved in dimerization and DNA binding, whereas their N terminal domains, which are involved in transcriptional activation, diverge. JunB is a transcription factor involved in regulating gene activity following the primary growth factor response. It binds to the DNA sequence 5'-TGA[CG]TCA-3'.</p>
Gene ID:	3727
UniProt:	<a href="#">P17535</a>

## Application Details

Application Notes:	WB 1:300-5000 ELISA 1:500-1000 IHC-P 1:200-400 IHC-F 1:100-500 IF(IHC-P) 1:50-200 IF(IHC-F) 1:50-200 IF(ICC) 1:50-200 ICC 1:100-500
Restrictions:	For Research Use only

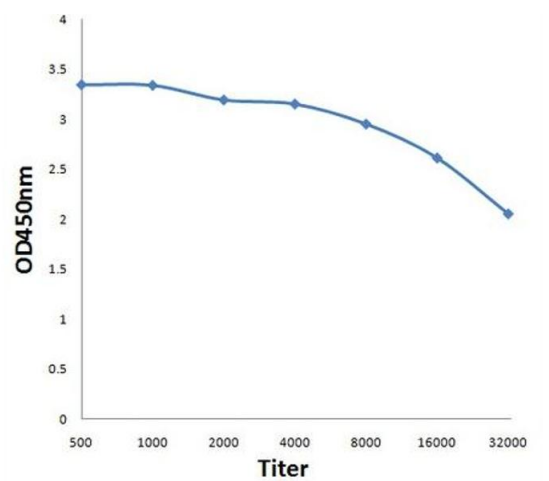
## Handling

Format:	Liquid
Concentration:	1 µg/µL
Buffer:	0.01M TBS( pH 7.4) with 1 % BSA, 0.02 % Proclin300 and 50 % Glycerol.
Preservative:	ProClin
Precaution of Use:	This product contains ProClin: a POISONOUS AND HAZARDOUS SUBSTANCE, which should be handled by trained staff only.
Storage:	4 °C, -20 °C

Handling

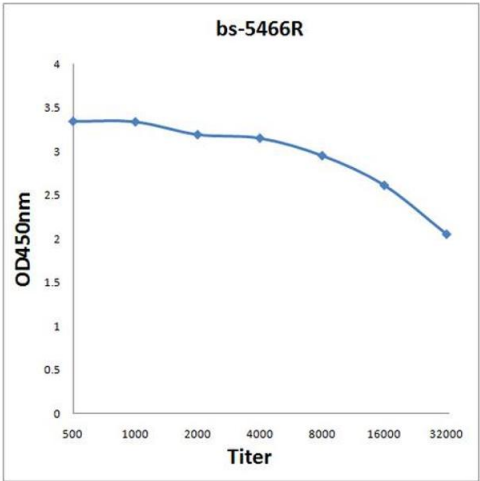
Storage Comment:	Shipped at 4°C. Store at -20°C for one year. Avoid repeated freeze/thaw cycles.
Expiry Date:	12 months

Images



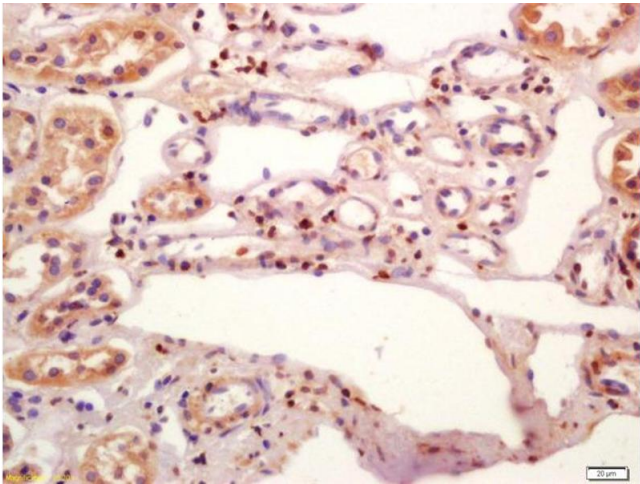
ELISA

**Image 1.** Antigen: 0.2ug/100ul, Primary: Antiserum, 1:500, 1:1000, 1:2000, 1:4000, 1:8000, 1:16000, 1:32000, Secondary: HRP conjugated Goat Anti-Rabbit IgG at 1: 5000, TMB staining Read the data in Microplate Reader by 450nm,



ELISA

**Image 2.** Antigen: 0.2 µg/100 µL Primary: Antiserum, 1:500, 1:1000, 1:2000, 1:4000, 1:8000, 1:16000, 1:32000; Secondary: HRP conjugated Goat Anti-Rabbit IgG at 1: 5000; TMB staining; Read the data in Microplate Reader by 450nm



Immunohistochemistry

**Image 3.** Formalin-fixed and paraffin embedded human kidney labeled with Anti-phospho-JunD(Ser255) Polyclonal Antibody, Unconjugated (ABIN802473) at 1:200 followed by conjugation to the secondary antibody and DAB staining