

Datasheet for ABIN810075
anti-Integrin beta 3 antibody**2** Images**6** Publications[Go to Product page](#)

Overview

Quantity:	0.1 mg
Target:	Integrin beta 3 (ITGB3)
Reactivity:	Human, Non-Human Primate
Host:	Mouse
Clonality:	Monoclonal
Conjugate:	This Integrin beta 3 antibody is un-conjugated
Application:	Western Blotting (WB), Flow Cytometry (FACS), Immunohistochemistry (Frozen Sections) (IHC (fro))

Product Details

Clone:	VIPL2
Isotype:	IgG1 kappa
Specificity:	The mouse monoclonal antibody VIPL2 recognizes an extracellular epitope of CD61, a 90-110 kDa transmembrane glycoprotein of integrin family, expressed on platelets, megacaryocytes, osteoclasts, endothelial cells and other cell types, including leucocytes and smooth muscle cells.
Cross-Reactivity (Details):	Human, Non-Human Primates
Purification:	Purified by protein-A affinity chromatography.
Purity:	> 95 % (by SDS-PAGE)

Target Details

Target:	Integrin beta 3 (ITGB3)
Alternative Name:	CD61 (ITGB3 Products)
Background:	<p>Integrin subunit beta 3,CD61 (beta3 integrin) is a transmembrane glycoprotein, which associates with CD41 or CD51 Molecules to form heterodimeric adhesion receptors.</p> <p>CD41/CD61 complex is one of the earliest markers of the megakaryocytic lineage. It binds to fibronectin, fibrinogen and von Willebrand factor, and is involved in platelet aggregation.</p> <p>CD51/CD61 complex has similar binding properties and is involved in modulating migration and survival of angiogenic endothelial cells.,integrin beta 3, ITGB3, GP3A</p>
Gene ID:	3690
UniProt:	P05106
Pathways:	Regulation of G-Protein Coupled Receptor Protein Signaling , Signaling Events mediated by VEGFR1 and VEGFR2 , Smooth Muscle Cell Migration , Integrin Complex

Application Details

Application Notes:	Flow cytometry: Recommended dilution: 1-4 µg/mL.
Restrictions:	For Research Use only

Handling

Concentration:	1 mg/mL
Buffer:	Phosphate buffered saline (PBS), pH 7.4, 15 mM sodium azide
Preservative:	Sodium azide
Precaution of Use:	This product contains Sodium azide: a POISONOUS AND HAZARDOUS SUBSTANCE which should be handled by trained staff only.
Handling Advice:	Do not freeze.
Storage:	4 °C
Storage Comment:	Store at 2-8°C. Do not freeze.

Publications

Product cited in:	Barrett, Dai, Gamberg, Gallant, Grant: "Circulating CD14-CD36+ peripheral blood mononuclear cells constitutively produce interleukin-10." in: Journal of leukocyte biology , Vol. 82, Issue 1, pp.
-------------------	---

152-60, (2007) ([PubMed](#)).

Mondal, Williams, Ali, Eilers, Agrawal: "The HIV-1 Tat protein selectively enhances CXCR4 and inhibits CCR5 expression in megakaryocytic K562 cells." in: **Experimental biology and medicine (Maywood, N.J.)**, Vol. 230, Issue 9, pp. 631-44, (2005) ([PubMed](#)).

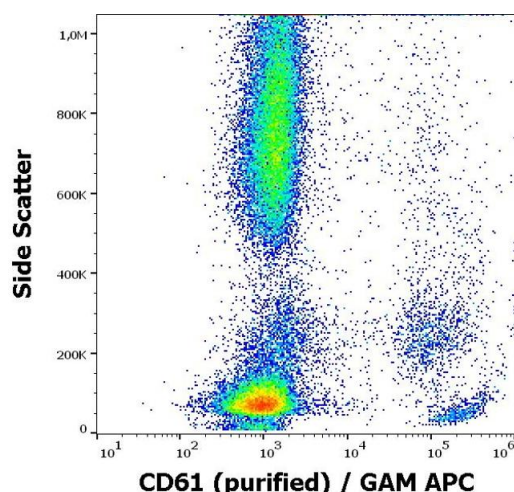
Williams, Mondal, Agrawal: "The HIV-1 Tat protein enhances megakaryocytic commitment of K562 cells by facilitating CREB transcription factor coactivation by CBP." in: **Experimental biology and medicine (Maywood, N.J.)**, Vol. 230, Issue 11, pp. 872-84, (2005) ([PubMed](#)).

Roberts, Woods, Dale, Van Der Sluijs, Norman: "Protein kinase B/Akt acts via glycogen synthase kinase 3 to regulate recycling of alpha v beta 3 and alpha 5 beta 1 integrins." in: **Molecular and cellular biology**, Vol. 24, Issue 4, pp. 1505-15, (2004) ([PubMed](#)).

Ciarlet, Crawford, Cheng, Blutt, Rice, Bergelson, Estes: "VLA-2 (alpha2beta1) integrin promotes rotavirus entry into cells but is not necessary for rotavirus attachment." in: **Journal of virology**, Vol. 76, Issue 3, pp. 1109-23, (2002) ([PubMed](#)).

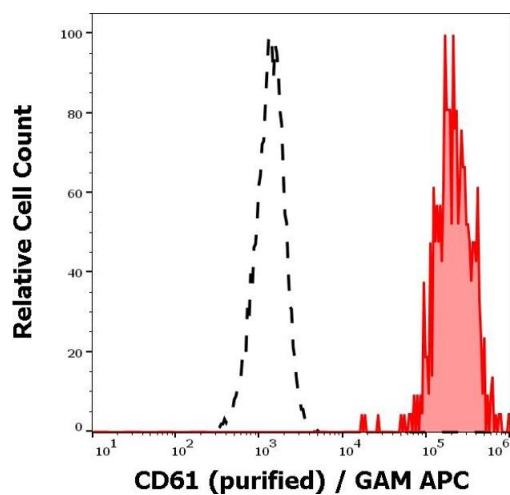
There are more publications referencing this product on: [Product page](#)

Images



Flow Cytometry

Image 1. Flow cytometry surface staining pattern of human peripheral whole blood stained using anti-human CD61 (VIPL2) purified antibody (concentration in sample 3 µg/mL, GAM APC).



Flow Cytometry

Image 2. Separation of human CD61 positive thrombocytes (red-filled) from neutrophil granulocytes (black-dashed) in flow cytometry analysis (surface staining) of peripheral whole blood stained using anti-human CD61 (VIPL2) purified antibody (concentration in sample 3 µg/mL, GAM APC).