



[Go to Product page](#)

Datasheet for ABIN810076

anti-CD103 antibody

2 Images

9 Publications

Overview

Quantity:	0.1 mg
Target:	CD103 (ITGAE)
Reactivity:	Human, Non-Human Primate
Host:	Mouse
Clonality:	Monoclonal
Conjugate:	This CD103 antibody is un-conjugated
Application:	Flow Cytometry (FACS), Western Blotting (WB), Immunoprecipitation (IP), Immunohistochemistry (Frozen Sections) (IHC (fro))

Product Details

Immunogen:	HTLV-1 induced human T cell line MAPS16
Clone:	Ber-ACT8
Isotype:	IgG1 kappa
Specificity:	The mouse monoclonal antibody Ber-ACT8 recognizes an extracellular epitope of CD103 (alpha E integrin), a type I transmembrane glycoprotein primarily found on intestinal intraepithelial lymphocytes.
Cross-Reactivity (Details):	Human, Non-Human Primates
Purification:	Purified by protein-A affinity chromatography.
Purity:	> 95 % (by SDS-PAGE)

Target Details

Target:	CD103 (ITGAE)
Alternative Name:	CD103 (ITGAE Products)
Background:	<p>Integrin subunit alpha E,CD103 / integrin alphaE is an integrin subunit that is expressed on intraepithelial lymphocytes, epithelial dendritic cells, lamina propria-derived dendritic cells, a subpopulation of lamina propria T cells, a small subset of peripheral lymphocytes, namely T reg cells, and on activated and TGF-beta stimulated lymphocytes. CD103 is in mature form cleaved into two disulfide-linked chains (C-terminal 150 kDa chain and N-terminal 25 kDa chain). It heterodimerizes with integrin beta7 subunit to form alphaE/beta7 integrin (mucosal lymphocyte 1 antigen), which through binding E-cadherin mediates homing of lymphocytes to the intestinal epithelium, and, in addition to the role in adhesion, may serve as an accessory molecule for intraepithelial lymphocyte activation.,Integrin alpha E, ITGAE</p>
Gene ID:	3682
UniProt:	P38570

Application Details

Application Notes:	Flow cytometry: Recommended dilution: 1-4 µg/mL.
Restrictions:	For Research Use only

Handling

Concentration:	1 mg/mL
Buffer:	Phosphate buffered saline (PBS), pH 7.4, 15 mM sodium azide
Preservative:	Sodium azide
Precaution of Use:	This product contains Sodium azide: a POISONOUS AND HAZARDOUS SUBSTANCE which should be handled by trained staff only.
Handling Advice:	Do not freeze.
Storage:	4 °C
Storage Comment:	Store at 2-8°C. Do not freeze.

Publications

Product cited in:	Zhang, Bertucci, Ramsey-Goldman, Burt, Datta et al.: "Regulatory T cell (Treg) subsets return in patients with refractory lupus following stem cell transplantation, and TGF-beta-producing
-------------------	---

CD8+ Treg cells are associated with immunological remission of ..." in: **Journal of immunology (Baltimore, Md. : 1950)**, Vol. 183, Issue 10, pp. 6346-58, (2009) ([PubMed](#)).

Jaensson, Uronen-Hansson, Pabst, Eksteen, Tian, Coombes, Berg, Davidsson, Powrie, Johansson-Lindbom, Agace: "Small intestinal CD103+ dendritic cells display unique functional properties that are conserved between mice and humans." in: **The Journal of experimental medicine**, Vol. 205, Issue 9, pp. 2139-49, (2008) ([PubMed](#)).

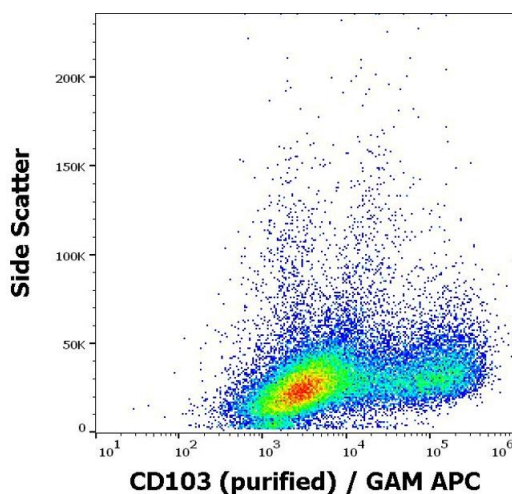
Cardoso, Garlet, Moreira, Júnior, Rossi, Silva: "Characterization of CD4+CD25+ natural regulatory T cells in the inflammatory infiltrate of human chronic periodontitis." in: **Journal of leukocyte biology**, Vol. 84, Issue 1, pp. 311-8, (2008) ([PubMed](#)).

Kost, Holden, Mann: "Marginal zone B-cell lymphoma: a retrospective immunophenotypic analysis." in: **Cytometry. Part B, Clinical cytometry**, Vol. 74, Issue 5, pp. 282-6, (2008) ([PubMed](#)).

Sigmundsdottir, Johnston, Gudjonsson, Bjarnason, Valdimarsson: "Methotrexate markedly reduces the expression of vascular E-selectin, cutaneous lymphocyte-associated antigen and the numbers of mononuclear leucocytes in psoriatic skin." in: **Experimental dermatology**, Vol. 13, Issue 7, pp. 426-34, (2004) ([PubMed](#)).

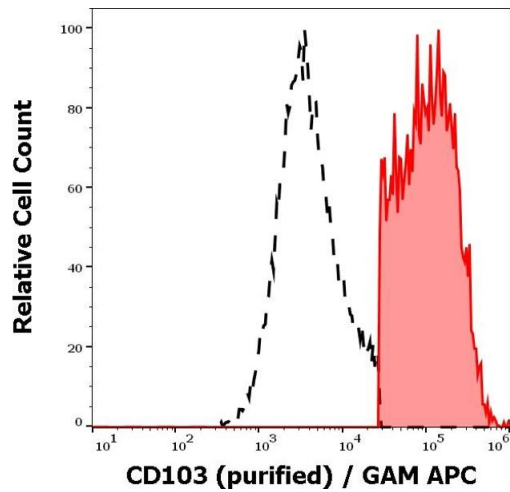
There are more publications referencing this product on: [Product page](#)

Images



Flow Cytometry

Image 1. Flow cytometry surface staining pattern of human PHA stimulated peripheral blood mononuclear cells stained using anti-human CD103 (Ber-ACT8) purified antibody (concentration in sample 3 µg/mL, GAM APC).



Flow Cytometry

Image 2. Separation of human CD103 positive cells (red-filled) from CD103 negative cells (black-dashed) in flow cytometry analysis (surface staining) of human peripheral whole blood using anti-human CD103 (Ber-ACT8) purified antibody (concentration in sample 3 µg/mL, GAM APC).