

Datasheet for ABIN810079

**anti-Integrin beta 3 antibody (FITC)****3** Images**6** Publications[Go to Product page](#)

## Overview

Quantity:	100 tests
Target:	Integrin beta 3 (ITGB3)
Reactivity:	Human, Non-Human Primate
Host:	Mouse
Clonality:	Monoclonal
Conjugate:	This Integrin beta 3 antibody is conjugated to FITC
Application:	Flow Cytometry (FACS)

## Product Details

Clone:	VIPL2
Isotype:	IgG1 kappa
Specificity:	The mouse monoclonal antibody VIPL2 recognizes an extracellular epitope of CD61, a 90-110 kDa transmembrane glycoprotein of integrin family, expressed on platelets, megacaryocytes, osteoclasts, endothelial cells and other cell types, including leucocytes and smooth muscle cells.
Cross-Reactivity (Details):	Human, Non-Human Primates
Purification:	Purified antibody is conjugated with fluorescein isothiocyanate (FITC) under optimum conditions and unconjugated antibody and free fluorochrome are removed by size-exclusion chromatography.

## Target Details

Target:	Integrin beta 3 (ITGB3)
Alternative Name:	CD61 ( <a href="#">ITGB3 Products</a> )
Background:	<p>Integrin subunit beta 3,CD61 (beta3 integrin) is a transmembrane glycoprotein, which associates with CD41 or CD51 Molecules to form heterodimeric adhesion receptors. CD41/CD61 complex is one of the earliest markers of the megakaryocytic lineage. It binds to fibronectin, fibrinogen and von Willebrand factor, and is involved in platelet aggregation. CD51/CD61 complex has similar binding properties and is involved in modulating migration and survival of angiogenic endothelial cells.,integrin beta 3, ITGB3, GP3A</p>
Gene ID:	3690
UniProt:	<a href="#">P05106</a>
Pathways:	<a href="#">Regulation of G-Protein Coupled Receptor Protein Signaling</a> , <a href="#">Signaling Events mediated by VEGFR1 and VEGFR2</a> , <a href="#">Smooth Muscle Cell Migration</a> , <a href="#">Integrin Complex</a>

## Application Details

Application Notes:	Flow cytometry: The reagent is designed for analysis of human blood cells using 4 µL reagent / 100 µL of whole blood or 10 <sup>6</sup> cells in a suspension. The content of a vial (0.4 ml) is sufficient for 100 tests.
Comment:	The purified antibody is conjugated with Fluorescein isothiocyanate (FITC) under optimum conditions. The reagent is free of unconjugated FITC and adjusted for direct use. No reconstitution is necessary.
Restrictions:	For Research Use only

## Handling

Reconstitution:	No reconstitution is necessary.
Buffer:	Stabilizing phosphate buffered saline (PBS), pH 7.4, 15 mM sodium azide
Preservative:	Sodium azide
Precaution of Use:	This product contains Sodium azide: a POISONOUS AND HAZARDOUS SUBSTANCE which should be handled by trained staff only.
Handling Advice:	<b>Do not freeze.</b> Avoid prolonged exposure to light.
Storage:	4 °C

## Handling

---

Storage Comment: Store at 2-8°C. Protect from prolonged exposure to light. Do not freeze.

## Publications

---

Product cited in: Barrett, Dai, Gamberg, Gallant, Grant: "Circulating CD14-CD36+ peripheral blood mononuclear cells constitutively produce interleukin-10." in: **Journal of leukocyte biology**, Vol. 82, Issue 1, pp. 152-60, (2007) ([PubMed](#)).

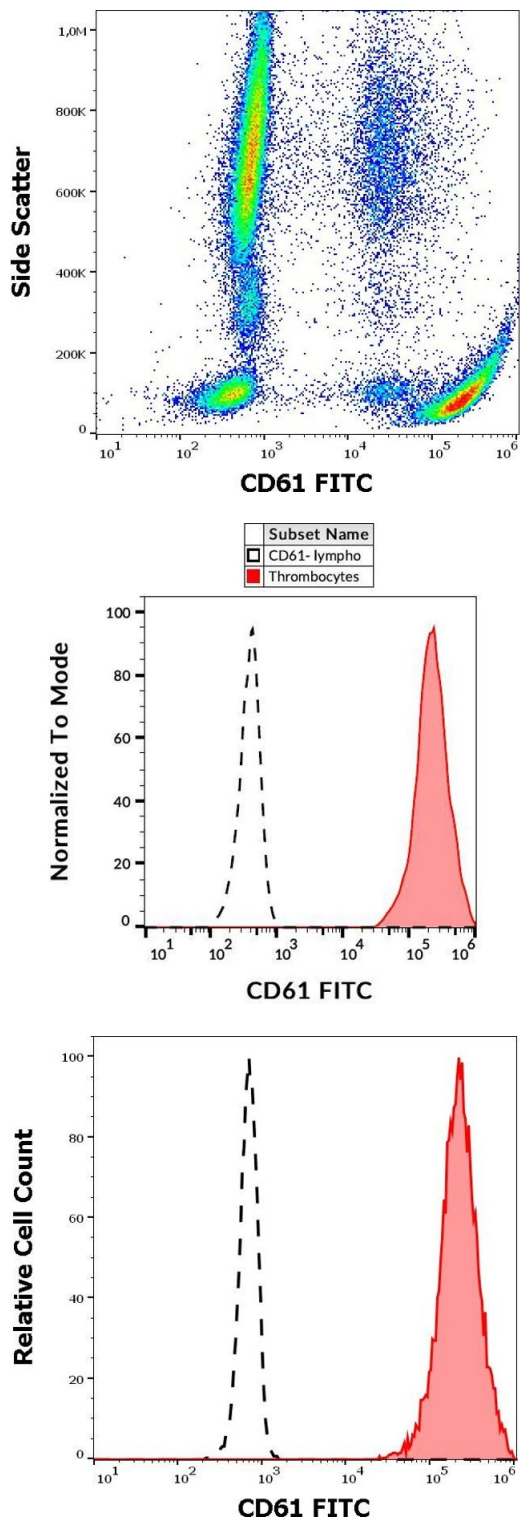
Mondal, Williams, Ali, Eilers, Agrawal: "The HIV-1 Tat protein selectively enhances CXCR4 and inhibits CCR5 expression in megakaryocytic K562 cells." in: **Experimental biology and medicine (Maywood, N.J.)**, Vol. 230, Issue 9, pp. 631-44, (2005) ([PubMed](#)).

Williams, Mondal, Agrawal: "The HIV-1 Tat protein enhances megakaryocytic commitment of K562 cells by facilitating CREB transcription factor coactivation by CBP." in: **Experimental biology and medicine (Maywood, N.J.)**, Vol. 230, Issue 11, pp. 872-84, (2005) ([PubMed](#)).

Roberts, Woods, Dale, Van Der Sluijs, Norman: "Protein kinase B/Akt acts via glycogen synthase kinase 3 to regulate recycling of alpha v beta 3 and alpha 5 beta 1 integrins." in: **Molecular and cellular biology**, Vol. 24, Issue 4, pp. 1505-15, (2004) ([PubMed](#)).

Ciarlet, Crawford, Cheng, Blutt, Rice, Bergelson, Estes: "VLA-2 (alpha2beta1) integrin promotes rotavirus entry into cells but is not necessary for rotavirus attachment." in: **Journal of virology**, Vol. 76, Issue 3, pp. 1109-23, (2002) ([PubMed](#)).

There are more publications referencing this product on: [Product page](#)



### Flow Cytometry

**Image 1.** Flow cytometry surface staining pattern of human peripheral whole blood stained using anti-human CD61 (VIPL2) FITC antibody (4  $\mu$ L reagent / 100  $\mu$ L of peripheral whole blood).

### Flow Cytometry

**Image 2.** Surface staining of human peripheral blood with anti-human CD61 (VIPL2) FITC.

### Flow Cytometry

**Image 3.** Separation of thrombocytes (red-filled) from neutrophil granulocytes (black-dashed) in flow cytometry analysis (surface staining) of human peripheral whole blood stained using anti-human CD61 (VIPL2) FITC antibody (4  $\mu$ L reagent / 100  $\mu$ L of peripheral whole blood).