

Datasheet for ABIN810081
anti-CD103 antibody (FITC)[Go to Product page](#)

1 Image

9 Publications

Overview

Quantity:	100 tests
Target:	CD103 (ITGAE)
Reactivity:	Human, Non-Human Primate
Host:	Mouse
Clonality:	Monoclonal
Conjugate:	This CD103 antibody is conjugated to FITC
Application:	Flow Cytometry (FACS)

Product Details

Immunogen:	HTLV-1 induced human T cell line MAPS16
Clone:	Ber-ACT8
Isotype:	IgG1 kappa
Specificity:	The mouse monoclonal antibody Ber-ACT8 recognizes an extracellular epitope of CD103 (alpha E integrin), a type I transmembrane glycoprotein primarily found on intestinal intraepithelial lymphocytes.
Cross-Reactivity (Details):	Human, Non-Human Primates
Purification:	Purified antibody is conjugated with fluorescein isothiocyanate (FITC) under optimum conditions and unconjugated antibody and free fluorochrome are removed by size-exclusion chromatography.

Target Details

Target:	CD103 (ITGAE)
Alternative Name:	CD103 (ITGAE Products)
Background:	Integrin subunit alpha E,CD103 / integrin alphaE is an integrin subunit that is expressed on intraepithelial lymphocytes, epithelial dendritic cells, lamina propria-derived dendritic cells, a subpopulation of lamina propria T cells, a small subset of peripheral lymphocytes, namely T reg cells, and on activated and TGF-beta stimulated lymphocytes. CD103 is in mature form cleaved into two disulfide-linked chains (C-terminal 150 kDa chain and N-terminal 25 kDa chain). It heterodimerizes with integrin beta7 subunit to form alphaE/beta7 integrin (mucosal lymphocyte 1 antigen), which through binding E-cadherin mediates homing of lymphocytes to the intestinal epithelium, and, in addition to the role in adhesion, may serve as an accessory molecule for intraepithelial lymphocyte activation.,Integrin alpha E, ITGAE
Gene ID:	3682
UniProt:	P38570

Application Details

Application Notes:	Flow cytometry: The reagent is designed for analysis of human blood cells using 4 µL reagent / 100 µL of whole blood or 10 ⁶ cells in a suspension. The content of a vial (0.4 ml) is sufficient for 100 tests.
Comment:	The purified antibody is conjugated with Fluorescein isothiocyanate (FITC) under optimum conditions. The reagent is free of unconjugated FITC and adjusted for direct use. No reconstitution is necessary.
Restrictions:	For Research Use only

Handling

Reconstitution:	No reconstitution is necessary.
Buffer:	Stabilizing phosphate buffered saline (PBS), pH 7.4, 15 mM sodium azide
Preservative:	Sodium azide
Precaution of Use:	This product contains Sodium azide: a POISONOUS AND HAZARDOUS SUBSTANCE which should be handled by trained staff only.
Handling Advice:	Do not freeze. Avoid prolonged exposure to light.

Handling

Storage: 4 °C

Storage Comment: Store at 2-8°C. Protect from prolonged exposure to light. Do not freeze.

Publications

Product cited in: Zhang, Bertucci, Ramsey-Goldman, Burt, Datta et al.: "Regulatory T cell (Treg) subsets return in patients with refractory lupus following stem cell transplantation, and TGF-beta-producing CD8+ Treg cells are associated with immunological remission of ..." in: **Journal of immunology (Baltimore, Md. : 1950)**, Vol. 183, Issue 10, pp. 6346-58, (2009) ([PubMed](#)).

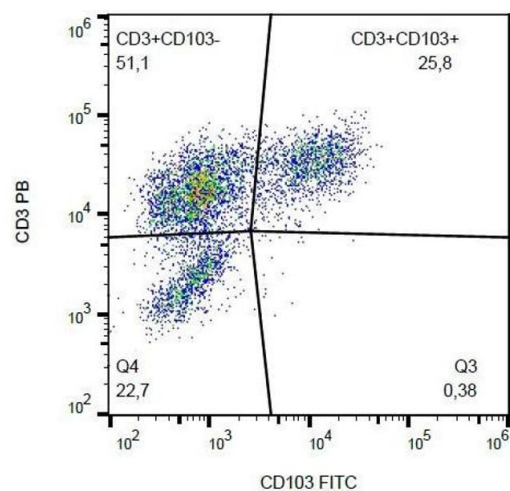
Jaensson, Uronen-Hansson, Pabst, Eksteen, Tian, Coombes, Berg, Davidsson, Powrie, Johansson-Lindbom, Agace: "Small intestinal CD103+ dendritic cells display unique functional properties that are conserved between mice and humans." in: **The Journal of experimental medicine**, Vol. 205, Issue 9, pp. 2139-49, (2008) ([PubMed](#)).

Cardoso, Garlet, Moreira, Júnior, Rossi, Silva: "Characterization of CD4+CD25+ natural regulatory T cells in the inflammatory infiltrate of human chronic periodontitis." in: **Journal of leukocyte biology**, Vol. 84, Issue 1, pp. 311-8, (2008) ([PubMed](#)).

Kost, Holden, Mann: "Marginal zone B-cell lymphoma: a retrospective immunophenotypic analysis." in: **Cytometry. Part B, Clinical cytometry**, Vol. 74, Issue 5, pp. 282-6, (2008) ([PubMed](#)).

Sigmundsdottir, Johnston, Gudjonsson, Bjarnason, Valdimarsson: "Methotrexate markedly reduces the expression of vascular E-selectin, cutaneous lymphocyte-associated antigen and the numbers of mononuclear leucocytes in psoriatic skin." in: **Experimental dermatology**, Vol. 13, Issue 7, pp. 426-34, (2004) ([PubMed](#)).

There are more publications referencing this product on: [Product page](#)



Flow Cytometry

Image 1. Surface staining of CD103 on PHA-activated PBMC with anti-CD103 (Ber-ACT8) FITC.