

Datasheet for ABIN863200  
**anti-SLC12A1 antibody (AA 33-55)**[2 Images](#)[4 Publications](#)[Go to Product page](#)

## Overview

Quantity:	100 µg
Target:	SLC12A1
Binding Specificity:	AA 33-55
Reactivity:	Rat
Host:	Rabbit
Clonality:	Polyclonal
Conjugate:	This SLC12A1 antibody is un-conjugated
Application:	Western Blotting (WB), Immunohistochemistry (IHC)

## Product Details

Immunogen:	Produced against a synthetic peptide mapping to a segment (amino acids 33-55) of the N-terminal tail of rat NKCC2 (antibody designation L224).
Specificity:	Detects ~160 kDa.
Cross-Reactivity:	Human, Mouse, Rat
Purification:	Protein A Purified

## Target Details

Target:	SLC12A1
Alternative Name:	NKCC2 ( <a href="#">SLC12A1 Products</a> )
Background:	NKCC2, a kidney-specific member of the cation chloride co-transporter family SLC12, facilitates

## Target Details

transport of sodium, potassium, and chloride ions from the lumen of the renal thick ascending limb into the cell (1, 2). Transport of sodium dilutes the luminal fluid, decreasing its osmolality creating an osmotic driving force for water reabsorption in the connecting tubule and cortical collecting duct under the influence of the hormone vasopressin. NKCC2 is found on the apical surface of the thick ascending limb of the loop of Henle and is blocked by loop diuretics such as furosemide (1).

Gene ID: 25065

NCBI Accession: [NP\\_001257546](#)

UniProt: [Q5PQV1](#)

## Application Details

Application Notes:

- WB (1:1000)
- IHC (1:25)
- optimal dilutions for assays should be determined by the user.

Comment: 1 µg/ml of ABIN863200 was sufficient for detection of NKCC2 in 10 µg of rat kidney tissue lysate by colorimetric immunoblot analysis using Goat anti-rabbit IgG:HRP as the secondary antibody.

Restrictions: For Research Use only

## Handling

Format: Liquid

Concentration: 1 mg/mL

Buffer: PBS, 50 % glycerol, 0.09 % sodium azide, Storage buffer may change when conjugated

Preservative: Sodium azide

Precaution of Use: This product contains Sodium azide: a POISONOUS AND HAZARDOUS SUBSTANCE which should be handled by trained staff only.

Storage: -20 °C

Storage Comment: -20°C

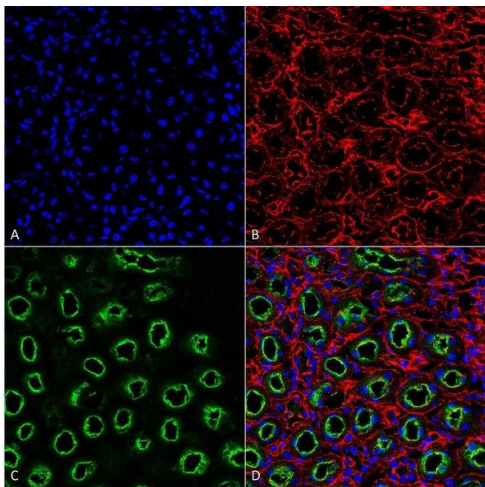
## Publications

Product cited in: Tang, Dai, He, Doty, Shultz, Sampson, Dai: "MEK guards proteome stability and inhibits tumor-

suppressive amyloidogenesis via HSF1." in: **Cell**, Vol. 160, Issue 4, pp. 729-44, (2015) ([PubMed](#)).

Epelbaum, Youssef, Lacor, Chaurand, Duplus, Brugg, Duyckaerts, Delatour: "Acute amnesic encephalopathy in amyloid- $\beta$  oligomer-injected mice is due to their widespread diffusion in vivo." in: **Neurobiology of aging**, Vol. 36, Issue 6, pp. 2043-52, (2015) ([PubMed](#)).

Images



Immunohistochemistry

**Image 1.** Immunohistochemistry analysis using Rabbit Anti-NKCC2 Polyclonal Antibody (ABIN863200). Tissue: Kidney. Species: Rat. Fixation: Formalin Fixed Paraffin-Embedded. Primary Antibody: Rabbit Anti-NKCC2 Polyclonal Antibody (ABIN863200) at 1:25 for 1 hour at RT. Secondary Antibody: Goat Anti-Rabbit IgG: Alexa Fluor 488. Counterstain: Actin-binding Phalloidin-Alexa Fluor 633, DAPI (blue) nuclear stain. Magnification: 63X. (A) DAPI (blue) nuclear stain. (B) Phalloidin Alex Fluor 633 F-Actin stain. (C) NKCC2 Antibody (D) Composite

Western Blotting

**Image 2.** NKCC2 Western Blotting, rat kidney tissue.

