

Datasheet for ABIN863206

anti-Aquaporin 1 antibody (N-Term)**2** Images[Go to Product page](#)

Overview

Quantity:	100 µg
Target:	Aquaporin 1 (AQP1)
Binding Specificity:	N-Term
Reactivity:	Rat
Host:	Rabbit
Clonality:	Polyclonal
Conjugate:	This Aquaporin 1 antibody is un-conjugated
Application:	Western Blotting (WB), Immunohistochemistry (IHC), Immunofluorescence (IF), Immunocytochemistry (ICC)

Product Details

Immunogen:	Produced against the N-terminal peptide (sequence N-MASEFKKKLF) of rat Aquaporin 1
Specificity:	Detects ~28.5 kDa. May detect larger glycosylated bands ~35-50 kDa.
Cross-Reactivity:	Human, Mouse, Rat
Purification:	Protein A Purified

Target Details

Target:	Aquaporin 1 (AQP1)
Alternative Name:	Aquaporin 1 (AQP1 Products)
Background:	Aquaporins selectively conduct water molecules in and out of the cell, while preventing the

Target Details

passage of ions and other solutes. Known as water channels, they are integral membrane pore proteins (1, 2). Aquaporin 1 is a widely expressed water channel, found in the basolateral and apical plasma membranes of the proximal tubes, the descending loop of Henel and in the descending portion of the vasa recta. Additionally it is found in red blood cells, vascular endothelium, gastrointestinal tract, sweat glands and lungs. It is not regulated by vasopressin (3).

Gene ID: 25240

NCBI Accession: [NP_036910](#)

UniProt: [P29975](#)

Pathways: [Hormone Transport](#)

Application Details

Application Notes:

- WB (1:2000)
- IHC (1:200)
- ICC/IF (1:400)
- optimal dilutions for assays should be determined by the user.

Comment: 0.5 µg/ml of ABIN863206 was sufficient for detection of aquaporin 1 in 10 µg of rat kidney tissue lysate by colorimetric immunoblot analysis using Goat anti-rabbit IgG:HRP as the secondary antibody.

Restrictions: For Research Use only

Handling

Format: Liquid

Concentration: 1 mg/mL

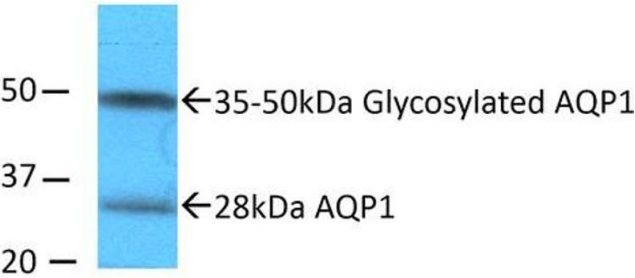
Buffer: PBS, 50 % glycerol, 0.09 % sodium azide, Storage buffer may change when conjugated

Preservative: Sodium azide

Precaution of Use: This product contains Sodium azide: a POISONOUS AND HAZARDOUS SUBSTANCE which should be handled by trained staff only.

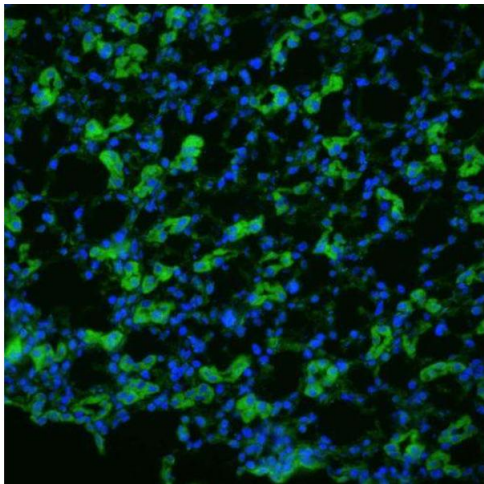
Storage: -20 °C

Storage Comment: -20°C



Western Blotting

Image 1. Western blot analysis of Rat kidney inner medullary homogenates showing detection of Aquaporin 1 protein using Rabbit Anti-Aquaporin 1 Polyclonal Antibody . Primary Antibody: Rabbit Anti-Aquaporin 1 Polyclonal Antibody at 1:2000. Showing glycosylated and non-glycosylated bands.



Immunohistochemistry

Image 2. Immunohistochemistry analysis using Rabbit Anti-Aquaporin 1 Polyclonal Antibody . Tissue: kidney tissue. Species: Rat. Primary Antibody: Rabbit Anti-Aquaporin 1 Polyclonal Antibody at 1:200. Secondary Antibody: FITC Goat Anti-Rabbit (green).