



[Go to Product page](#)

Datasheet for ABIN870291
anti-Actin antibody (C-Term)

1 Image

Overview

Quantity:	100 µL
Target:	Actin
Binding Specificity:	C-Term
Reactivity:	Human, Rat, Mouse
Host:	Rabbit
Clonality:	Monoclonal
Conjugate:	This Actin antibody is un-conjugated
Application:	Western Blotting (WB), ELISA, Immunoprecipitation (IP)

Product Details

Immunogen:	Peptide derived from C-terminal sequence of human beta-actin
Clone:	S12-I

Target Details

Target:	Actin
Abstract:	Actin Products
UniProt:	P60710 , P60711 , P60709

Application Details

Application Notes:	WB - 1:2 000, ELISA - 1:10 000 - 1:20 000
--------------------	---

Application Details

Restrictions: For Research Use only

Handling

Format: Liquid

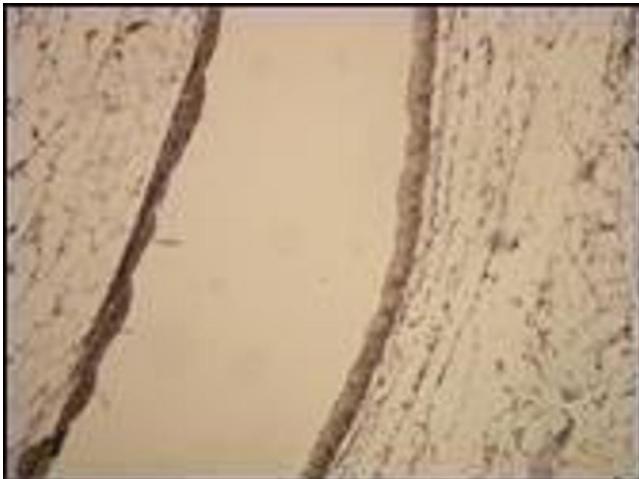
Buffer: 20 mM Tris-HCl, pH 8.0, Stabilizer: 10 mg/ml BSA, Preservative: 0.05% sodium azide

Preservative: Sodium azide

Precaution of Use: This product contains sodium azide: a POISONOUS AND HAZARDOUS SUBSTANCE which should be handled by trained staff only.

Storage: -20 °C

Images



Immunohistochemistry

Image 1.