



[Go to Product page](#)

Datasheet for ABIN870327

anti-ERK1/2 antibody (phosphospecific)

3 Images

Overview

Quantity:	100 µL
Target:	ERK1/2 (MAPK1/3)
Binding Specificity:	phosphospecific
Reactivity:	Human, Mouse, Rat
Host:	Rabbit
Clonality:	Monoclonal
Conjugate:	This ERK1/2 antibody is un-conjugated
Application:	Western Blotting (WB), ELISA, Immunoprecipitation (IP)

Product Details

Immunogen:	Peptide derived from the protein area including conserved pT-E-pY motif of activated Erk 1,2
Clone:	G15-B

Target Details

Target:	ERK1/2 (MAPK1/3)
Alternative Name:	ERK1/2 (MAPK1/3 Products)
UniProt:	P28482 , P63085 , P63086

Application Details

Application Notes:	WB - 1:5 000, ELISA - 1:20 000 - 1:100 000
--------------------	--

Application Details

Restrictions: For Research Use only

Handling

Format: Liquid

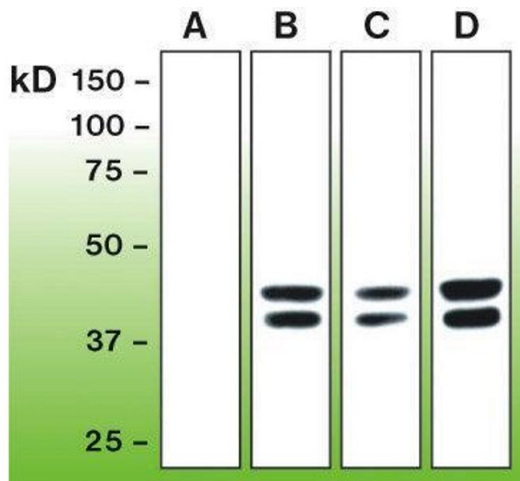
Buffer: 20 mM Tris-HCl, pH 8.0, Stabilizer: 10 mg/ml BSA, Preservative: 0.05% sodium azide

Preservative: Sodium azide

Precaution of Use: This product contains sodium azide: a POISONOUS AND HAZARDOUS SUBSTANCE which should be handled by trained staff only.

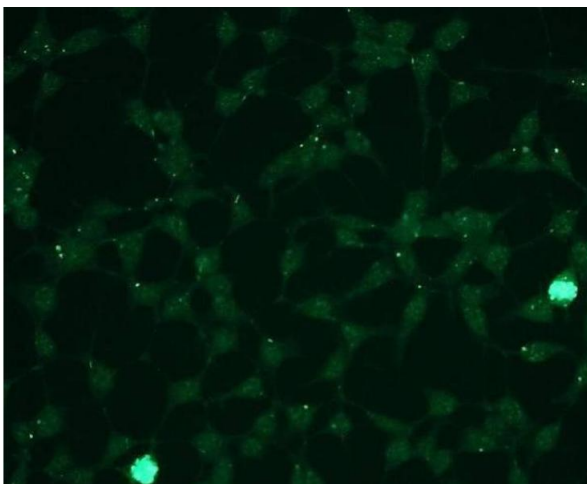
Storage: -20 °C

Images



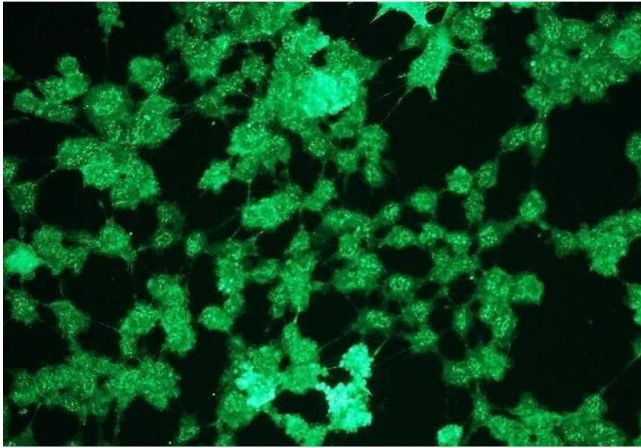
Western Blotting

Image 1.



Immunofluorescence

Image 2.



Immunofluorescence

Image 3.