



[Go to Product page](#)

Datasheet for ABIN870333

## anti-CTRP5 antibody (N-Term)

### 1 Image

#### Overview

Quantity:	100 µL
Target:	CTRP5 (C1QTNF5)
Binding Specificity:	N-Term
Reactivity:	Human, Mouse
Host:	Rabbit
Clonality:	Monoclonal
Conjugate:	This CTRP5 antibody is un-conjugated
Application:	Western Blotting (WB), ELISA, Immunoprecipitation (IP)

#### Product Details

Immunogen:	Peptide close to the amino terminus of human CTRP5
Clone:	A14-A

#### Target Details

Target:	CTRP5 (C1QTNF5)
Alternative Name:	CTRP5 ( <a href="#">C1QTNF5 Products</a> )
UniProt:	<a href="#">Q8K479</a> , <a href="#">Q9BXJ0</a>

#### Application Details

Application Notes:	WB - 1:5 000, ELISA - 1:50 000 - 1:100 000
--------------------	--

## Application Details

Restrictions: For Research Use only

## Handling

Format: Liquid

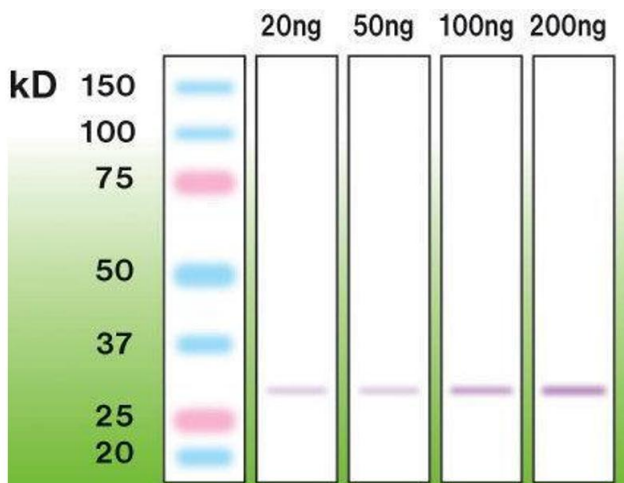
Buffer: 20 mM Tris-HCl, pH 8.0, Stabilizer: 10 mg/ml BSA, Preservative: 0.05% sodium azide

Preservative: Sodium azide

Precaution of Use: This product contains sodium azide: a POISONOUS AND HAZARDOUS SUBSTANCE which should be handled by trained staff only.

Storage: -20 °C

## Images



### Western Blotting

Image 1.