

Datasheet for ABIN870368

**Rabbit anti-Human Ig (C-Term), (Chain kappa), (Light Chain)
Antibody**[Go to Product page](#)**1** Image

Overview

Quantity:	100 µL
Target:	Ig
Binding Specificity:	C-Term, Chain kappa, Light Chain
Reactivity:	Human
Host:	Rabbit
Clonality:	Monoclonal
Application:	Immunohistochemistry (Frozen Sections) (IHC (fro)), Immunohistochemistry (Paraffin-embedded Sections) (IHC (p))

Product Details

Immunogen:	Peptide derived from C-terminal sequence of human kappa light chain IgG
Clone:	H16-E

Target Details

Target:	Ig
Alternative Name:	Immunoglobulin Ig (Ig Products)
UniProt:	P01834

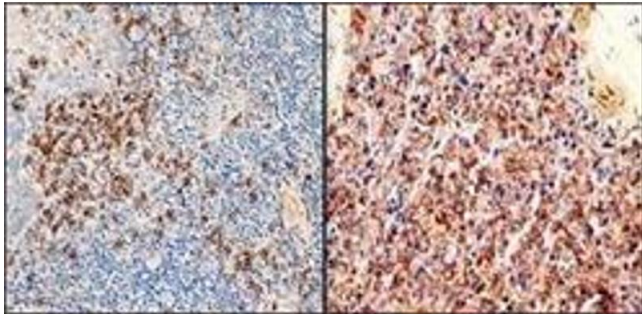
Application Details

Application Notes:	1:100 - 500
Restrictions:	For Research Use only

Handling

Format:	Liquid
Buffer:	20 mM Tris-HCl, pH 8.0, Stabilizer: 10 mg/ml BSA, Preservative: 0.05% sodium azide
Preservative:	Sodium azide
Precaution of Use:	This product contains sodium azide: a POISONOUS AND HAZARDOUS SUBSTANCE which should be handled by trained staff only.
Storage:	4 °C

Images



Immunohistochemistry

Image 1.