

Datasheet for ABIN870499
anti-CD1a antibody (C-Term)



[Go to Product page](#)

2 Images

Overview

Quantity:	100 µL
Target:	CD1a
Binding Specificity:	AA 240-256, C-Term
Reactivity:	Human
Host:	Rabbit
Clonality:	Monoclonal
Conjugate:	This CD1a antibody is un-conjugated
Application:	Immunohistochemistry (Paraffin-embedded Sections) (IHC (p))

Product Details

Purpose:	Anti-CD1a
Immunogen:	Peptide derived from C-terminal region, near the transmembrane domain of human CD1-a. Antibody recognizes the epitope between Gly240 - Ala256.
Clone:	L21-A
Isotype:	IgG
Specificity:	CD1a

Target Details

Target:	CD1a
Alternative Name:	CD1a (CD1a Products)

Target Details

Background:	CD1a has been shown to be expressed in dendritic cells and cortical thymocytes. This antigen is expressed on cells comprising Langerhans cell sarcoma and Langerhans cell histiocytosis.
UniProt:	P06126
Pathways:	Regulation of Leukocyte Mediated Immunity, Positive Regulation of Immune Effector Process

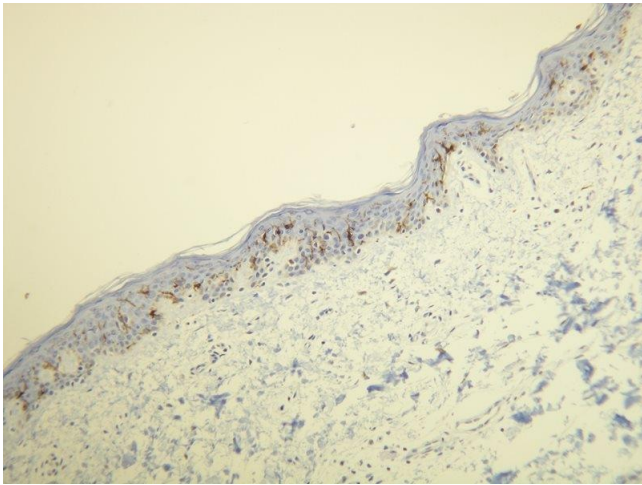
Application Details

Application Notes:	1:100-1:200
Restrictions:	For Research Use only

Handling

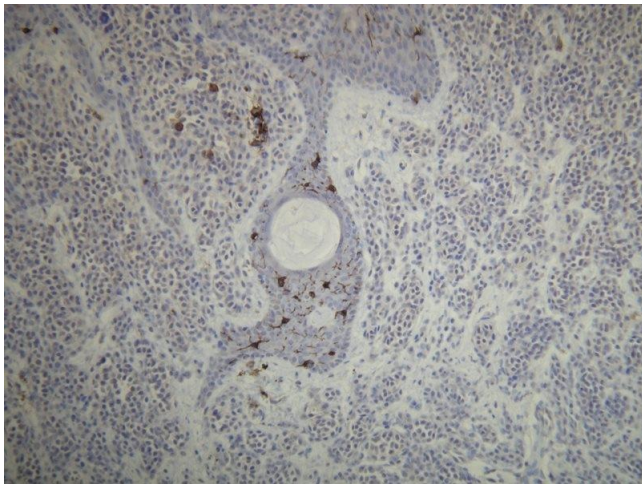
Format:	Liquid
Buffer:	20 mM Tris-HCl, pH 8.0, Stabilizer: 20 mg/mL BSA, Preservative: 0.05 % sodium azide
Preservative:	Sodium azide
Precaution of Use:	This product contains Sodium azide: a POISONOUS AND HAZARDOUS SUBSTANCE which should be handled by trained staff only.
Storage:	4 °C
Storage Comment:	+2 °C to +8 °C

Images



Immunohistochemistry

Image 1.



Immunohistochemistry

Image 2.