

Datasheet for ABIN870587

anti-Complement C4d antibody

2 Images



[Go to Product page](#)

Overview

Quantity:	100 µL
Target:	Complement C4d (C4d)
Reactivity:	Human
Host:	Rabbit
Clonality:	Monoclonal
Conjugate:	This Complement C4d antibody is un-conjugated
Application:	Immunohistochemistry (Paraffin-embedded Sections) (IHC (p)), Immunohistochemistry (Frozen Sections) (IHC (fro))

Product Details

Immunogen:	Peptide derived from internal sequence of human C4
Clone:	A24-T

Target Details

Target:	Complement C4d (C4d)
Abstract:	C4d Products
UniProt:	P0C0L4

Application Details

Application Notes:	1:100 - 200
--------------------	-------------

Application Details

Restrictions: For Research Use only

Handling

Format: Liquid

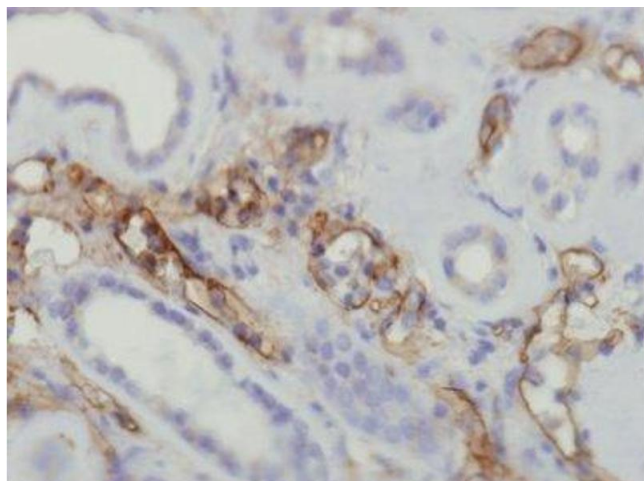
Buffer: 20 mM Tris-HCl, pH 8.0, Stabilizer: 10 mg/ml BSA, Preservative: 0.05% sodium azide

Preservative: Sodium azide

Precaution of Use: This product contains sodium azide: a POISONOUS AND HAZARDOUS SUBSTANCE which should be handled by trained staff only.

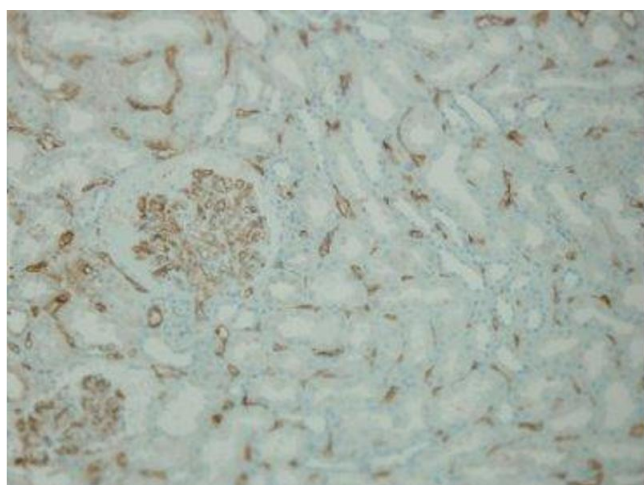
Storage: 4 °C

Images



Immunohistochemistry

Image 1.



Immunohistochemistry

Image 2.