

Datasheet for ABIN870635  
**anti-Myosin IB antibody (Internal Region)**[Go to Product page](#)

## 2 Images

## Overview

Quantity:	100 µg
Target:	Myosin IB (MYO1B)
Binding Specificity:	Internal Region
Reactivity:	Human, Mouse
Host:	Goat
Clonality:	Polyclonal
Conjugate:	This Myosin IB antibody is un-conjugated
Application:	Western Blotting (WB), ELISA, Immunohistochemistry (IHC)

## Product Details

Purpose:	MYO1B
Immunogen:	Peptide with sequence C-RTVEAKQEKVSTT, from the internal region of the protein sequence according to NP_001123630.1, NP_036355.2.
Sequence:	RTVEAKQEKV STT
Isotype:	IgG
Specificity:	This antibody is expected to recognize both reported isoforms (NP_001123630.1, NP_036355.2). Reported variants represent identical protein: NP_001123630.1, NP_001155291.1.
Cross-Reactivity:	Cow, Dog, Human, Mouse, Rat
Purification:	Purified from goat serum by ammonium sulphate precipitation followed by antigen affinity

## Product Details

chromatography using the immunizing peptide.

Grade: Verified

## Target Details

Target: Myosin IB (MYO1B)

Alternative Name: MYO1B ([MYO1B Products](#))

Background: MYO1B, myosin IB, myr1, MMI-alpha, MMIa, MYH-1c, MYO1B variant protein, OTTHUMP00000165861, myosin I alpha, myosin-I alpha, myosin-Ib

Molecular Weight: 125kDa

Gene ID: 4430, 17912, 117057

NCBI Accession: [NP\\_001123630](#), [NP\\_036355](#)

## Application Details

Application Notes: Immunohistochemistry: In paraffin embedded Human Cerebral Cortex shows cytoplasm staining in the neuronal bodies. Recommended concentration, 5-10 µg/mL.

Western Blot: Approx 120 kDa band observed in lysates of cell line NIH3T3 (calculated MW of 125 kDa according to Human NP\_036355.2 and 128 kDa according to Mouse NP\_034993.2). Recommended concentration: 1-3 µg/mL.

Peptide ELISA: antibody detection limit dilution 1:16000.

Restrictions: For Research Use only

## Handling

Format: Liquid

Concentration: 0.5 mg/mL

Buffer: Supplied at 0.5 mg/mL in Tris saline, 0.02 % sodium azide, pH 7.3 with 0.5 % bovine serum albumin.

Preservative: Sodium azide

Precaution of Use: This product contains Sodium azide: a POISONOUS AND HAZARDOUS SUBSTANCE which should be handled by trained staff only.

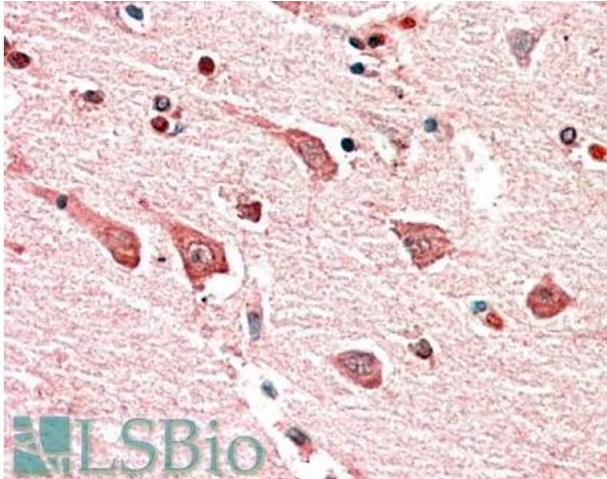
Handling Advice: Minimize freezing and thawing.

## Handling

Storage: -20 °C

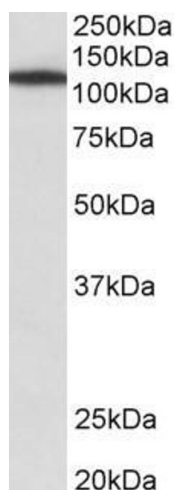
Storage Comment: Aliquot and store at -20°C, with minimal freeze/thawing. A working aliquot may be refrigerated at 4°C for a few weeks and still remain viable.

## Images



### Immunohistochemistry

**Image 1.** ABIN870635 (5µg/ml) staining of paraffin embedded Human Cerebral Cortex. Steamed antigen retrieval with citrate buffer pH 6, AP-staining.



### Western Blotting

**Image 2.** ABIN870635 (1µg/ml) staining of NIH3T3 lysate (35µg protein in RIPA buffer). Primary incubation was 1 hour. Detected by chemiluminescence.