

Datasheet for ABIN870637

anti-Cyp2d5 antibody (Internal Region)**1** Image[Go to Product page](#)

Overview

Quantity:	100 µg
Target:	Cyp2d5 (CYP2D5)
Binding Specificity:	Internal Region
Reactivity:	Rat
Host:	Goat
Clonality:	Polyclonal
Conjugate:	This Cyp2d5 antibody is un-conjugated
Application:	ELISA, Western Blotting (WB)

Product Details

Purpose:	Cyp2d5 / Cyp2d10 (rat)
Immunogen:	Peptide with sequence CDAFTAQNGRSINPK, from the internal region of the protein sequence according to NP_775426.1.
Sequence:	CDAFTAQNGR SINPK
Isotype:	IgG
Cross-Reactivity:	Rat
Purification:	Purified from goat serum by ammonium sulphate precipitation followed by antigen affinity chromatography using the immunizing peptide.
Grade:	Verified

Target Details

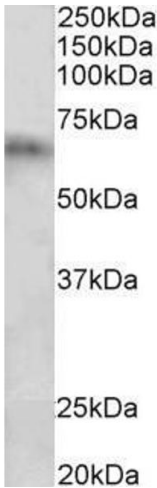
Target:	Cyp2d5 (CYP2D5)
Alternative Name:	Cyp2d5 (CYP2D5 Products)
Background:	Cyp2d5, cytochrome P450, family 2, subfamily d, polypeptide 5, Cyp2d10, MGC108540, CYP11D10, P450-CMF1B, P450-DB5, cytochrome P450 2D10, cytochrome P450, family 2, subfamily d, polypeptide 10, cytochrome P450-CMF1B, cytochrome P450-DB5, cytochrome P450CMF
Molecular Weight:	57.1kDa
Gene ID:	286963
NCBI Accession:	NP_775426

Application Details

Application Notes:	Western Blot: Approx 65 kDa band observed in Rat Spleen lysates (calculated MW of 57.1 kDa according to NP_775426.1). Recommended concentration: 1-3 µg/mL. Peptide ELISA: antibody detection limit dilution 1:32000.
Restrictions:	For Research Use only

Handling

Format:	Liquid
Concentration:	0.5 mg/mL
Buffer:	Supplied at 0.5 mg/mL in Tris saline, 0.02 % sodium azide, pH 7.3 with 0.5 % bovine serum albumin.
Preservative:	Sodium azide
Precaution of Use:	This product contains Sodium azide: a POISONOUS AND HAZARDOUS SUBSTANCE which should be handled by trained staff only.
Handling Advice:	Minimize freezing and thawing.
Storage:	-20 °C
Storage Comment:	Aliquot and store at -20°C, with minimal freeze/thawing. A working aliquot may be refrigerated at 4°C for a few weeks and still remain viable.



Western Blotting

Image 1. ABIN870637 (2µg/ml) staining of Rat Spleen lysate (35µg protein in RIPA buffer). Primary incubation was 1 hour. Detected by chemiluminescence.