

Datasheet for ABIN870638
anti-STK38 antibody (C-Term)[Go to Product page](#)

1 Image

Overview

Quantity:	100 µg
Target:	STK38
Binding Specificity:	C-Term
Reactivity:	Human, Rat
Host:	Goat
Clonality:	Polyclonal
Conjugate:	This STK38 antibody is un-conjugated
Application:	Western Blotting (WB), ELISA

Product Details

Purpose:	NDR1 / STK38
Immunogen:	Peptide with sequence C-KPTVATSNHPET, from the C Terminus (near) of the protein sequence according to NP_009202.1.
Sequence:	KPTVATSNHP ET
Isotype:	IgG
Specificity:	This antibody is NOT expected to cross-react with STK38L (GeneID 23012).
Cross-Reactivity:	Cow, Dog, Human, Pig, Rat
Purification:	Purified from goat serum by ammonium sulphate precipitation followed by antigen affinity chromatography using the immunizing peptide.
Grade:	Verified

Target Details

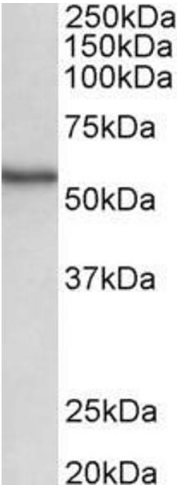
Target:	STK38
Alternative Name:	STK38 (STK38 Products)
Background:	STK38, serine/threonine kinase 38, NDR, NDR1, NDR1 protein kinase, Ndr Ser/Thr kinase-like protein, nuclear Dbf2-related 1, nuclear Dbf2-related kinase 1, serine threonine protein kinase, serine/threonine-protein kinase 38
Molecular Weight:	54.2kDa
Gene ID:	11329, 361813
NCBI Accession:	NP_009202

Application Details

Application Notes:	Western Blot: Approx 55 kDa band observed in Human and Rat Spleen lysates (calculated MW of 54.2 kDa according to NP_009202.1). Recommended concentration: 0.5-2 µg/mL. Peptide ELISA: antibody detection limit dilution 1:32000.
Restrictions:	For Research Use only

Handling

Format:	Liquid
Concentration:	0.5 mg/mL
Buffer:	Supplied at 0.5 mg/mL in Tris saline, 0.02 % sodium azide, pH 7.3 with 0.5 % bovine serum albumin.
Preservative:	Sodium azide
Precaution of Use:	This product contains Sodium azide: a POISONOUS AND HAZARDOUS SUBSTANCE which should be handled by trained staff only.
Handling Advice:	Minimize freezing and thawing.
Storage:	-20 °C
Storage Comment:	Aliquot and store at -20°C, with minimal freeze/thawing. A working aliquot may be refrigerated at 4°C for a few weeks and still remain viable.



Western Blotting

Image 1. ABIN870638 (0.5µg/ml) staining of Human Spleen lysate (35µg protein in RIPA buffer). Primary incubation was 1 hour. Detected by chemiluminescence.