

Datasheet for ABIN870639
anti-WFDC1 antibody (Internal Region)



[Go to Product page](#)

1 Image

Overview

Quantity:	100 µg
Target:	WFDC1
Binding Specificity:	Internal Region
Reactivity:	Mouse
Host:	Goat
Clonality:	Polyclonal
Conjugate:	This WFDC1 antibody is un-conjugated
Application:	Western Blotting (WB), ELISA

Product Details

Purpose:	Wfdc1 (mouse)
Immunogen:	Peptide with sequence C-RQRLHKEYPEGDSKN, from the internal region (near N Terminus) of the protein sequence according to NP_075884.1.
Sequence:	RQRLHKEYPE GDSKN
Isotype:	IgG
Cross-Reactivity:	Mouse, Rat
Purification:	Purified from goat serum by ammonium sulphate precipitation followed by antigen affinity chromatography using the immunizing peptide.
Grade:	Verified

Target Details

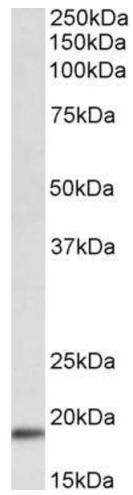
Target:	WFDC1
Alternative Name:	Wfdc1 (WFDC1 Products)
Background:	WFDC1, WAP four-disulfide core domain 1, ps20, WAP four-disulfide core domain 1 homolog, WAP four-disulfide core domain protein 1, prostate stromal protein ps20, ps20 growth inhibitor, 2310058A03Rik
Molecular Weight:	23.1kDa
Gene ID:	67866, 171112
NCBI Accession:	NP_075884

Application Details

Application Notes:	Western Blot: Approx 19 kDa band observed in Mouse Heart lysates (calculated MW of 23.1 kDa according to NP_075884.1). Recommended concentration: 0.3-1 µg/mL. Peptide ELISA: antibody detection limit dilution 1:16000.
Restrictions:	For Research Use only

Handling

Format:	Liquid
Concentration:	0.5 mg/mL
Buffer:	Supplied at 0.5 mg/mL in Tris saline, 0.02 % sodium azide, pH 7.3 with 0.5 % bovine serum albumin.
Preservative:	Sodium azide
Precaution of Use:	This product contains Sodium azide: a POISONOUS AND HAZARDOUS SUBSTANCE which should be handled by trained staff only.
Handling Advice:	Minimize freezing and thawing.
Storage:	-20 °C
Storage Comment:	Aliquot and store at -20°C, with minimal freeze/thawing. A working aliquot may be refrigerated at 4°C for a few weeks and still remain viable.



Western Blotting

Image 1. ABIN870639 (0.3 μ g/ml) staining of Mouse Heart lysate (35 μ g protein in RIPA buffer). Primary incubation was 1 hour. Detected by chemiluminescence.