

Datasheet for ABIN870641

anti-CRLS1 antibody (Internal Region)[Go to Product page](#)**1** Image

Overview

Quantity:	100 µg
Target:	CRLS1 (CLS)
Binding Specificity:	Internal Region
Reactivity:	Human
Host:	Goat
Clonality:	Polyclonal
Conjugate:	This CRLS1 antibody is un-conjugated
Application:	Western Blotting (WB), Immunohistochemistry (IHC), ELISA

Product Details

Purpose:	cardiolipin synthase 1
Immunogen:	Peptide with sequence C-RSALGSALDPLADK, from the internal region of the protein sequence according to NP_061968.1, NP_001120930.1.
Sequence:	RSALGSALDP LADK
Isotype:	IgG
Specificity:	This antibody is expected to recognize both reported isoforms (NP_061968.1, NP_001120930.1).
Cross-Reactivity:	Cow, Dog, Human, Mouse, Pig, Rat
Purification:	Purified from goat serum by ammonium sulphate precipitation followed by antigen affinity chromatography using the immunizing peptide.

Product Details

Grade: Verified

Target Details

Target:	CRLS1 (CLS)
Alternative Name:	CRLS1 (CLS Products)
Background:	CRLS1, cardiolipin synthase 1, C20orf155, CLS, CLS1, GCD10, dJ967N21.6, cardiolipin synthase
Molecular Weight:	32.6kDa
Gene ID:	54675
NCBI Accession:	NP_061968 , NP_001120930

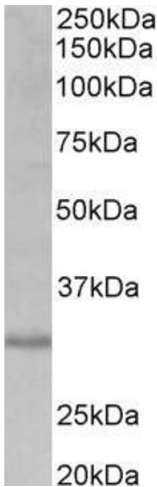
Application Details

Application Notes:	<p>Immunohistochemistry: Paraffin embedded Human Kidney. Recommended concentration: 5 µg/mL.</p> <p>Western Blot: Approx 30 kDa band observed in lysates of cell line HEK293 (calculated MW of 32.6 kDa according to NP_061968.1). Recommended concentration: 0.2-0.6 µg/mL. Primary incubation was 1 hour.</p> <p>Peptide ELISA: antibody detection limit dilution 1:64000.</p>
Restrictions:	For Research Use only

Handling

Format:	Liquid
Concentration:	0.5 mg/mL
Buffer:	Supplied at 0.5 mg/mL in Tris saline, 0.02 % sodium azide, pH 7.3 with 0.5 % bovine serum albumin.
Preservative:	Sodium azide
Precaution of Use:	This product contains Sodium azide: a POISONOUS AND HAZARDOUS SUBSTANCE which should be handled by trained staff only.
Handling Advice:	Minimize freezing and thawing.
Storage:	-20 °C
Storage Comment:	Aliquot and store at -20°C, with minimal freeze/thawing. A working aliquot may be refrigerated

at 4°C for a few weeks and still remain viable.



Western Blotting

Image 1. ABIN870641 (0.2µg/ml) staining of HEK293 lysate (35µg protein in RIPA buffer). Detected by chemiluminescence.