



[Go to Product page](#)

Datasheet for ABIN870642

anti-CYP2C8 antibody (Internal Region)

1 Image

Overview

Quantity:	100 µg
Target:	CYP2C8
Binding Specificity:	Internal Region
Reactivity:	Human
Host:	Goat
Clonality:	Polyclonal
Conjugate:	This CYP2C8 antibody is un-conjugated
Application:	ELISA, Western Blotting (WB)

Product Details

Purpose:	cytochrome P450 2C8
Immunogen:	Peptide with sequence C-KNVALTRSYIREK, from the internal region of the protein sequence according to NP_000761.3, NP_001185782.1, NP_001185783.1.
Sequence:	KNVALTRSYI REK
Isotype:	IgG
Specificity:	This antibody is expected to recognize all reported isoforms (NP_000761.3, NP_001185782.1, NP_001185783.1). No cross-reactivity with other 2C proteins expected. Reported variants represent identical protein: NP_001185782.1, NP_001185784.1
Cross-Reactivity:	Human
Purification:	Purified from goat serum by ammonium sulphate precipitation followed by antigen affinity

Product Details

chromatography using the immunizing peptide.

Grade: Verified

Target Details

Target: CYP2C8

Alternative Name: CYP2C8 ([CYP2C8 Products](#))

Background: CYP2C8, cytochrome P450, family 2, subfamily C, polypeptide 8, CPC8, CYP11C8, MP-12/MP-20, P450 form 1, cytochrome P450 2C8, cytochrome P450 IIC2, cytochrome P450 MP-12, cytochrome P450 MP-20, cytochrome P450 form 1, cytochrome P450, subfamily IIC (mephen

Molecular Weight: 55.8kDa

Gene ID: 1558

NCBI Accession: [NP_000761](#), [NP_001185782](#), [NP_001185783](#)

Application Details

Application Notes: Western Blot: Approx 55 kDa band observed in Human Liver lysates (calculated MW of 55.8 kDa according to NP_000761.3). Recommended concentration: 0.1-0.3 µg/mL. Primary incubation 1 hour at room temperature.
Peptide ELISA: antibody detection limit dilution 1:32000.

Restrictions: For Research Use only

Handling

Format: Liquid

Concentration: 0.5 mg/mL

Buffer: Supplied at 0.5 mg/mL in Tris saline, 0.02 % sodium azide, pH 7.3 with 0.5 % bovine serum albumin.

Preservative: Sodium azide

Precaution of Use: This product contains Sodium azide: a POISONOUS AND HAZARDOUS SUBSTANCE which should be handled by trained staff only.

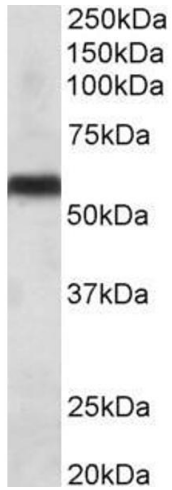
Handling Advice: Minimize freezing and thawing.

Storage: -20 °C

Handling

Storage Comment: Aliquot and store at -20°C, with minimal freeze/thawing. A working aliquot may be refrigerated at 4°C for a few weeks and still remain viable.

Images



Western Blotting

Image 1. ABIN870642 (0.1µg/ml) staining of Human Liver lysate (35µg protein in RIPA buffer). Primary incubation was 1 hour. Detected by chemiluminescence.