



Datasheet for ABIN870646  
**anti-ZCCHC11 antibody (Internal Region)**



[Go to Product page](#)

2 Images

Overview

Quantity:	100 µg
Target:	ZCCHC11
Binding Specificity:	Internal Region
Reactivity:	Mouse, Rat
Host:	Goat
Clonality:	Polyclonal
Conjugate:	This ZCCHC11 antibody is un-conjugated
Application:	Western Blotting (WB), ELISA

Product Details

Purpose:	Terminal Uridyltransferase 4 (mouse)
Immunogen:	Peptide with sequence C-QKSAEKQGDLPSET, from the internal region of the protein sequence according to NP_780681.2.
Sequence:	QKSAEKQGDLPSET
Isotype:	IgG
Cross-Reactivity:	Mouse, Rat
Purification:	Purified from goat serum by ammonium sulphate precipitation followed by antigen affinity chromatography using the immunizing peptide.
Grade:	Verified

## Target Details

---

Target:	ZCCHC11
Alternative Name:	Zcchc11 ( <a href="#">ZCCHC11 Products</a> )
Background:	Zcchc11, zinc finger, CCHC domain containing 11, RP23-406B13.1, 6030404K05Rik, 9230115F04Rik, KIAA0191, PPAPD3, mKIAA0191, OTTMUSP00000008601, TUTase 4, terminal uridylyltransferase 4, zinc finger CCHC domain-containing protein 11
Molecular Weight:	185kDa
Gene ID:	230594, 313481
NCBI Accession:	<a href="#">NP_780681</a>
Pathways:	<a href="#">Stem Cell Maintenance</a>

## Application Details

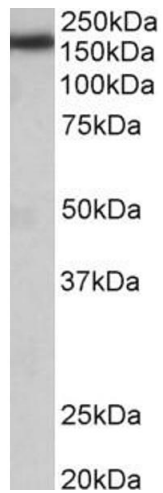
---

Application Notes:	Western Blot: Approx 170 kDa band observed in Rat Brain lysates (calculated MW of 163 kDa according to Rat NP_001101423.1 and 185 kDa according to Mouse NP_780681.2). Recommended concentration: 0.03-0.1 µg/mL. Approx 200 kDa band observed in Mouse Testis lysa Peptide ELISA: antibody detection limit dilution 1:32000.
Restrictions:	For Research Use only

## Handling

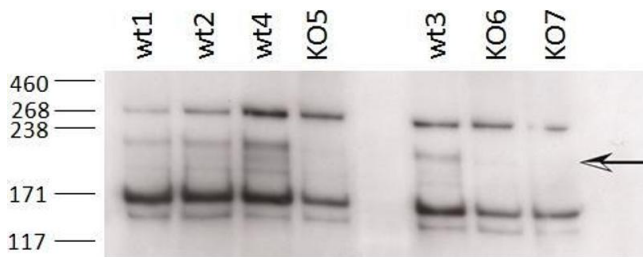
---

Format:	Liquid
Concentration:	0.5 mg/mL
Buffer:	Supplied at 0.5 mg/mL in Tris saline, 0.02 % sodium azide, pH 7.3 with 0.5 % bovine serum albumin.
Preservative:	Sodium azide
Precaution of Use:	This product contains Sodium azide: a POISONOUS AND HAZARDOUS SUBSTANCE which should be handled by trained staff only.
Handling Advice:	Minimize freezing and thawing.
Storage:	-20 °C
Storage Comment:	Aliquot and store at -20°C, with minimal freeze/thawing. A working aliquot may be refrigerated at 4°C for a few weeks and still remain viable.



### Western Blotting

**Image 1.** ABIN870646 (0.05 µg/mL) staining of Rat Brain lysate (35 µg protein in RIPA buffer). Primary incubation was 1 hour. Detected by chemiluminescence.



### Western Blotting

**Image 2.** ABIN870646 (0.2µg/ml) staining of different Testis lysates from wildtype 8-9 week old C57BL/6 (wt) and knock-out (KO) mice (35µg protein in RIPA buffer). Primary incubation was 2 hours. Detected by chemiluminescence. Data obtained from an anonymous customer