

Datasheet for ABIN870656
anti-SYNGAP1 antibody (AA 1169-1183)[Go to Product page](#)

1 Image

Overview

Quantity:	100 µg
Target:	SYNGAP1
Binding Specificity:	AA 1169-1183
Reactivity:	Human, Mouse
Host:	Goat
Clonality:	Polyclonal
Conjugate:	This SYNGAP1 antibody is un-conjugated
Application:	Western Blotting (WB), ELISA, Immunofluorescence (IF), Immunohistochemistry (IHC)

Product Details

Purpose:	SYNGAP1 (aa1169-1183)
Immunogen:	Peptide with sequence C-ESAHIEREEYKLKEY, from the internal region (near C Terminus) of the protein sequence according to NP_006763.2.
Sequence:	ESAHIEREEY KLKEY
Isotype:	IgG
Cross-Reactivity:	Cow, Dog, Human, Mouse, Pig, Rat
Purification:	Purified from goat serum by ammonium sulphate precipitation followed by antigen affinity chromatography using the immunizing peptide.
Grade:	Verified

Target Details

Target:	SYNGAP1
Alternative Name:	SYNGAP1 (SYNGAP1 Products)
Background:	SYNGAP1, synaptic Ras GTPase activating protein 1, DKFZp761G1421, KIAA1938, MRD5, RASA1, RASA5, SYNGAP, OTTHUMP00000209046, neuronal RasGAP, ras GTPase-activating protein SynGAP, synaptic Ras GTPase activating protein 1 homolog, synaptic Ras GTPase activa
Molecular Weight:	148kDa
Gene ID:	8831, 240057, 192117
NCBI Accession:	NP_006763
Pathways:	Regulation of long-term Neuronal Synaptic Plasticity

Application Details

Application Notes:	Immunohistochemistry: Paraffin embedded Human Brain (Cortex). Recommended concentration: 4 µg/mL. Western Blot: Approx 150 kDa band observed in Human Cerebral Cortex and in Mouse Brain lysates (calculated MW of 148 kDa according to Human NP_006763.2 and Mouse XP_990642.3). Recommended concentration: 0.5-2 µg/mL. Primary incubation 1 hour at room tempera Peptide ELISA: antibody detection limit dilution 1:32000.
Comment:	Immunofluorescence: Strong expression of the protein seen in Neuro-2a, A431 and U251 cells. Recommended concentration: 10µg/ml.
Restrictions:	For Research Use only

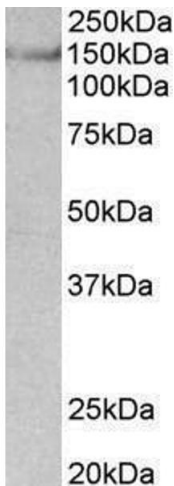
Handling

Format:	Liquid
Concentration:	0.5 mg/mL
Buffer:	Supplied at 0.5 mg/mL in Tris saline, 0.02 % sodium azide, pH 7.3 with 0.5 % bovine serum albumin.
Preservative:	Sodium azide
Precaution of Use:	This product contains Sodium azide: a POISONOUS AND HAZARDOUS SUBSTANCE which should be handled by trained staff only.

Handling

Handling Advice:	Minimize freezing and thawing.
Storage:	-20 °C
Storage Comment:	Aliquot and store at -20°C, with minimal freeze/thawing. A working aliquot may be refrigerated at 4°C for a few weeks and still remain viable.

Images



Western Blotting

Image 1. ABIN870656 (0.03µg/ml) staining of Mouse Brain lysate (35µg protein in RIPA buffer). Primary incubation was 1 hour. Detected by chemiluminescence.