

Datasheet for ABIN870661
anti-NPPA antibody (C-Term)[Go to Product page](#)

2 Images

Overview

Quantity:	100 µg
Target:	NPPA
Binding Specificity:	C-Term
Reactivity:	Human, Rat, Mouse
Host:	Goat
Clonality:	Polyclonal
Conjugate:	This NPPA antibody is un-conjugated
Application:	Western Blotting (WB), ELISA, Immunohistochemistry (IHC)

Product Details

Purpose:	Atrial natriuretic factor
Immunogen:	Peptide with sequence RIGAQSGLG CNSFR, from the C Terminus of the protein sequence according to NP_006163.1.
Sequence:	RIGAQSGLG CNSFR
Isotype:	IgG
Specificity:	The immunizing peptide represents aa137-150 of the precursor NPPA.
Cross-Reactivity:	Cow, Dog, Human, Mouse, Pig, Rat
Purification:	Purified from goat serum by ammonium sulphate precipitation followed by antigen affinity chromatography using the immunizing peptide.
Grade:	Verified

Target Details

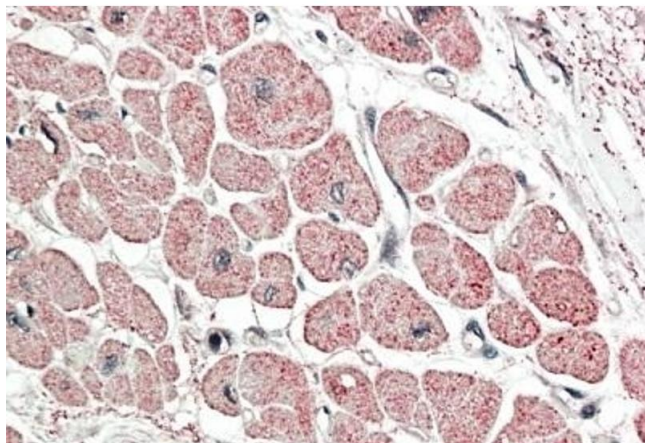
Target:	NPPA
Alternative Name:	NPPA (NPPA Products)
Background:	NPPA, natriuretic peptide A, ANF, ANP, ATFB6, CDD-ANF, PND, atrial natriuretic factor, atriopeptin, cardionatrin, natriuretic peptide precursor A, prepronatriodilatin
Molecular Weight:	16.4kDa
Gene ID:	4878, 230899, 24602
NCBI Accession:	NP_006163

Application Details

Application Notes:	<p>Immunohistochemistry: In paraffin embedded Human Heart shows vesicular staining inside the cardiac fibrils, accumulating towards the cell membrane. Recommended concentration, 5-10 µg/mL.</p> <p>Western Blot: Approx 19 kDa band observed in Mouse and Rat Heart lysates (calculated MW of 16.4 kDa according to Human precursor NP_006163.1 and 16.6 kDa according to Mouse precursor NP_032751.1). Recommended concentration: 0.01-0.03 µg/mL.</p> <p>Peptide ELISA: antibody detection limit dilution 1:32000.</p>
Restrictions:	For Research Use only

Handling

Format:	Liquid
Concentration:	0.5 mg/mL
Buffer:	Supplied at 0.5 mg/mL in Tris saline, 0.02 % sodium azide, pH 7.3 with 0.5 % bovine serum albumin.
Preservative:	Sodium azide
Precaution of Use:	This product contains Sodium azide: a POISONOUS AND HAZARDOUS SUBSTANCE which should be handled by trained staff only.
Handling Advice:	Minimize freezing and thawing.
Storage:	-20 °C
Storage Comment:	Aliquot and store at -20°C, with minimal freeze/thawing. A working aliquot may be refrigerated at 4°C for a few weeks and still remain viable.



Immunohistochemistry

Image 1. ABIN870661 (5 µg/mL) staining of paraffin embedded Human Heart. Steamed antigen retrieval with citrate buffer pH 6, AP-staining.



Western Blotting

Image 2. ABIN870661 (0.01 µg/ml) staining of Mouse Heart lysate (35 µg protein in RIPA buffer). Primary incubation was 1 hour. Detected by chemiluminescence.