

Datasheet for ABIN870662

**anti-CYP1A2 antibody (Internal Region)****2** Images[Go to Product page](#)

## Overview

Quantity:	100 µg
Target:	CYP1A2
Binding Specificity:	Internal Region
Reactivity:	Human, Mouse, Rat
Host:	Goat
Clonality:	Polyclonal
Conjugate:	This CYP1A2 antibody is un-conjugated
Application:	Western Blotting (WB), ELISA

## Product Details

Purpose:	Cytochrome P450 1A2 (mouse)
Immunogen:	Peptide with sequence C-HSENYKDNGGLIPEEK, from the internal region of the protein sequence according to NP_034123.1.
Sequence:	HSENYKDNGG LIPEEK
Isotype:	IgG
Specificity:	This antibody is not expected to cross-react to the similar P450 1A1.
Cross-Reactivity:	Mouse, Rat
Purification:	Purified from goat serum by ammonium sulphate precipitation followed by antigen affinity chromatography using the immunizing peptide.
Grade:	Verified

## Target Details

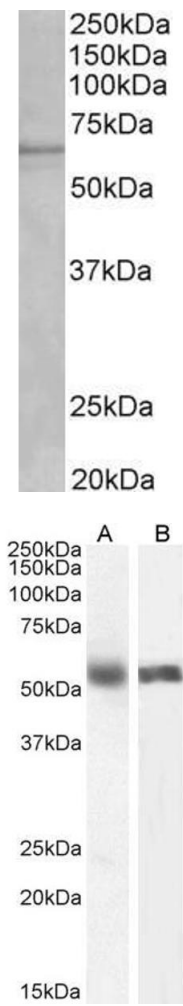
Target:	CYP1A2
Alternative Name:	Cyp1a2 ( <a href="#">CYP1A2 Products</a> )
Background:	Cyp1a2, cytochrome P450, family 1, subfamily A, polypeptide 2, CP12, Cyp1a1, P450-3, CYPIA2, aromatic compound inducible, cytochrome P450 1A2, cytochrome P450 family 1 subfamily a polypeptide 1, cytochrome P450, 1a2, aromatic compound inducible, cytochrom
Molecular Weight:	58.2kDa
Gene ID:	13077, 24297
NCBI Accession:	<a href="#">NP_034123</a>

## Application Details

Application Notes:	Western Blot: Approx 60 kDa band observed in Mouse fetal Liver lysates and approx. 55 kDa in Human Liver and Lung lysates (calculated MW of 58.4 kDa according to Human NP_000752.2 and 58.2 kDa according to Mouse NP_034123.1). Recommended concentration: 0.3-1 Peptide ELISA: antibody detection limit dilution 1:32000.
Restrictions:	For Research Use only

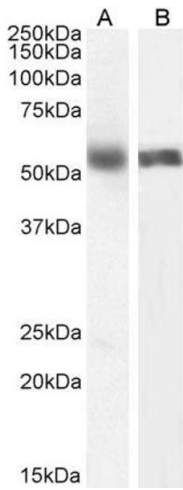
## Handling

Format:	Liquid
Concentration:	0.5 mg/mL
Buffer:	Supplied at 0.5 mg/mL in Tris saline, 0.02 % sodium azide, pH 7.3 with 0.5 % bovine serum albumin.
Preservative:	Sodium azide
Precaution of Use:	This product contains Sodium azide: a POISONOUS AND HAZARDOUS SUBSTANCE which should be handled by trained staff only.
Handling Advice:	Minimize freezing and thawing.
Storage:	-20 °C
Storage Comment:	Aliquot and store at -20°C, with minimal freeze/thawing. A working aliquot may be refrigerated at 4°C for a few weeks and still remain viable.



**Western Blotting**

**Image 1.** Antibody (1µg/ml) staining of fetal Mouse Liver lysate (35µg protein in RIPA buffer). Primary incubation was 1 hour. Detected by chemiluminescence.



**Western Blotting**

**Image 2.** ABIN870662 (0.5µg/ml) staining of Human Liver (A) and (1ug/ml) Lung (B) lysate (35µg protein in RIPA buffer). Primary incubation was 1 hour. Detected by chemiluminescence.