

Datasheet for ABIN870663

anti-CYP1A1 antibody (Internal Region)

5 Images

[Go to Product page](#)

Overview

Quantity:	100 µg
Target:	CYP1A1
Binding Specificity:	Internal Region
Reactivity:	Human, Mouse, Rat
Host:	Goat
Clonality:	Polyclonal
Conjugate:	This CYP1A1 antibody is un-conjugated
Application:	Western Blotting (WB), ELISA, Immunohistochemistry (IHC), Immunofluorescence (IF)

Product Details

Purpose:	cytochrome P450 1A1 (mouse)
Immunogen:	Peptide with sequence C-QDRKLDENANVQLSD, from the internal region of the protein sequence according to NP_001129531.1.
Sequence:	QDRKLDENAN VQLSD
Isotype:	IgG
Specificity:	This antibody is not expected to cross-react with the similar P450 1A2
Cross-Reactivity:	Mouse, Rat
Purification:	Purified from goat serum by ammonium sulphate precipitation followed by antigen affinity chromatography using the immunizing peptide.
Grade:	Verified

Target Details

Target:	CYP1A1
Alternative Name:	cyp1a1 (CYP1A1 Products)
Background:	Cyp1a1, cytochrome P450, family 1, subfamily A, polypeptide 1, AHH, AHRR, CP11, Cyp1a2, P450-1, CYPIA1, aromatic compound inducible, cytochrome P450 1A1, cytochrome P450 family 1 subfamily a polypeptide 2, cytochrome P450 subfamily I, polypeptide 1, cytoc
Molecular Weight:	59.2kDa
Gene ID:	13076, 24296
NCBI Accession:	NP_001129531
Pathways:	Steroid Hormone Biosynthesis , Regulation of Lipid Metabolism by PPARalpha

Application Details

Application Notes:	Immunohistochemistry: Paraffin embedded Human Tonsil. Recommended concentration: 10 µg/mL. Western Blot: Approx 55 kDa band observed in Human and Rat Lung lysates (calculated MW of 58.2 kDa according to Human NP_000490.1 and 59.4 kDa according to Rat NP_036672.). Primary incubation was 1 hour. Recommended concentration: 0.1-0.3 µg/mL. Peptide ELISA: antibody detection limit dilution 1:64000.
Comment:	Immunofluorescence: Strong expression of the protein seen in the ER and cytoplasm of NIH3T3 cells. Recommended concentration: 10µg/ml.
Restrictions:	For Research Use only

Handling

Format:	Liquid
Concentration:	0.5 mg/mL
Buffer:	Supplied at 0.5 mg/mL in Tris saline, 0.02 % sodium azide, pH 7.3 with 0.5 % bovine serum albumin.
Preservative:	Sodium azide
Precaution of Use:	This product contains Sodium azide: a POISONOUS AND HAZARDOUS SUBSTANCE which should be handled by trained staff only.
Handling Advice:	Minimize freezing and thawing.

Handling

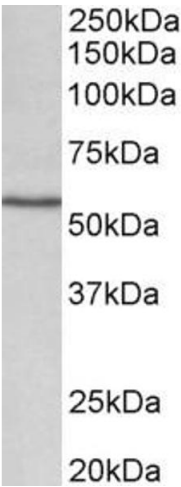
Storage:	-20 °C
Storage Comment:	Aliquot and store at -20°C, with minimal freeze/thawing. A working aliquot may be refrigerated at 4°C for a few weeks and still remain viable.

Images



Immunofluorescence

Image 1. (ABIN870663) Immunofluorescence analysis of paraformaldehyde fixed NIH3T3 cells, permeabilized with 0.15 % Triton. Primary incubation 1hr (10 µg/mL) followed by Alexa Fluor 488 secondary antibody (2 µg/mL), showing endoplasmic reticulum and cytoplasmic staining. The nuclear stain is DAPI (blue). Negative control: Unimmunized goat IgG (10 µg/mL) followed by Alexa Fluor 488 secondary antibody (2 µg/mL).



Western Blotting

Image 2. ABIN870663 (0.1µg/ml) staining of Rat Lung lysate (35µg protein in RIPA buffer). Detected by chemiluminescence.



Western Blotting

Image 3. ABIN870663 (0.1µg/ml) staining of Human Lung lysate (35µg protein in RIPA buffer). Detected by chemiluminescence.

Images

Please check the [product details page](#) for more images. Overall 5 images are available for ABIN870663.