

Datasheet for ABIN870664
anti-FGF5 antibody (C-Term)[Go to Product page](#)

3 Images

Overview

Quantity:	100 µg
Target:	FGF5
Binding Specificity:	C-Term
Reactivity:	Human
Host:	Goat
Clonality:	Polyclonal
Conjugate:	This FGF5 antibody is un-conjugated
Application:	Western Blotting (WB), ELISA

Product Details

Purpose:	FGF5 (isoform1)
Immunogen:	Peptide with sequence C-PLSAPRKNTNSVK, from the C Terminus of the protein sequence according to NP_004455.2, NP_149134.1.
Sequence:	PLSAPRKNTN SVK
Isotype:	IgG
Specificity:	This antibody is expected to recognize reported isoform 1 (NP_004455.2) only.
Cross-Reactivity:	Human
Purification:	Purified from goat serum by ammonium sulphate precipitation followed by antigen affinity chromatography using the immunizing peptide.
Grade:	Verified

Target Details

Target:	FGF5
Alternative Name:	FGF5 (FGF5 Products)
Background:	FGF5, fibroblast growth factor 5, HBGF-5, Smag-82, FGF-5, heparin-binding growth factor 5
Molecular Weight:	29.6kDa
Gene ID:	2250
NCBI Accession:	NP_004455 , NP_149134
Pathways:	RTK Signaling , Fc-epsilon Receptor Signaling Pathway , EGFR Signaling Pathway , Neurotrophin Signaling Pathway

Application Details

Application Notes:	Western Blot: Approx 29 kDa band observed in Human Placenta lysates (calculated MW of 29.6 kDa according to NP_004455.2). Recommended concentration: 0.1-0.3 µg/mL. Primary incubation was 1 hour. Peptide ELISA: antibody detection limit dilution 1:32000.
Restrictions:	For Research Use only

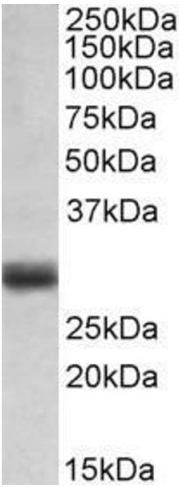
Handling

Format:	Liquid
Concentration:	0.5 mg/mL
Buffer:	Supplied at 0.5 mg/mL in Tris saline, 0.02 % sodium azide, pH 7.3 with 0.5 % bovine serum albumin.
Preservative:	Sodium azide
Precaution of Use:	This product contains Sodium azide: a POISONOUS AND HAZARDOUS SUBSTANCE which should be handled by trained staff only.
Handling Advice:	Minimize freezing and thawing.
Storage:	-20 °C
Storage Comment:	Aliquot and store at -20°C, with minimal freeze/thawing. A working aliquot may be refrigerated at 4°C for a few weeks and still remain viable.



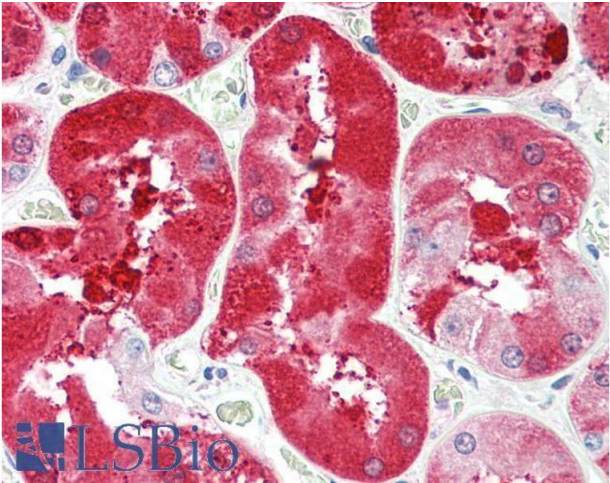
Western Blotting

Image 1. (ABIN870664) (0.1 µg/mL) staining of Human Placenta lysate (35 µg protein in RIPA buffer). Detected by chemiluminescence.



Western Blotting

Image 2. ABIN870664 (0.1µg/ml) staining of Human Placenta lysate (35µg protein in RIPA buffer). Detected by chemiluminescence.



Immunohistochemistry

Image 3. ABIN870664 (5µg/ml) staining of paraffin embedded Human Kidney. Steamed antigen retrieval with citrate buffer pH 6, AP-staining.