

Datasheet for ABIN870665
anti-ATP2B1 antibody (AA 312-327)[Go to Product page](#)

1 Image

Overview

Quantity:	100 µg
Target:	ATP2B1
Binding Specificity:	AA 312-327
Reactivity:	Human
Host:	Goat
Clonality:	Polyclonal
Conjugate:	This ATP2B1 antibody is un-conjugated
Application:	Western Blotting (WB), ELISA

Product Details

Purpose:	ATP2B1 (aa312-327)
Immunogen:	Peptide with sequence C-KQDGA IENRNKAKAQD, from the internal region of the protein sequence according to NP_001001323.1, NP_001673.2.
Sequence:	KQDGA IENRN KAKAQD
Isotype:	IgG
Specificity:	This antibody is expected to recognize both reported isoforms (NP_001001323.1, NP_001673.2).
Cross-Reactivity:	Cow, Dog, Human, Mouse, Pig, Rat
Purification:	Purified from goat serum by ammonium sulphate precipitation followed by antigen affinity chromatography using the immunizing peptide.

Product Details

Grade: Verified

Target Details

Target: ATP2B1

Alternative Name: ATP2B1 ([ATP2B1 Products](#))

Background: ATP2B1, ATPase, Ca++ transporting, plasma membrane 1, PMCA1, PMCA1kb, plasma membrane calcium ATPase, plasma membrane calcium pump, plasma membrane calcium-ATPase, plasma membrane calcium-transporting ATPase 1

Molecular Weight: 135kDa

Gene ID: 490, 67972, 29598

NCBI Accession: [NP_001001323](#), [NP_001673](#)

Pathways: [Ribonucleoside Biosynthetic Process](#)

Application Details

Application Notes: Western Blot: Approx 150 kDa band observed in lysates of cell line HeLa (calculated MW of 135 kDa according to NP_001673.2). Recommended concentration: 0.03-0.1 µg/mL.
Peptide ELISA: antibody detection limit dilution 1:64000.

Restrictions: For Research Use only

Handling

Format: Liquid

Concentration: 0.5 mg/mL

Buffer: Supplied at 0.5 mg/mL in Tris saline, 0.02 % sodium azide, pH 7.3 with 0.5 % bovine serum albumin.

Preservative: Sodium azide

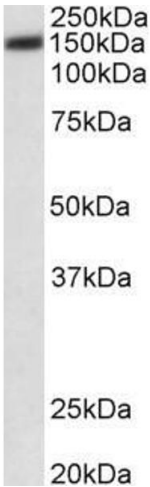
Precaution of Use: This product contains Sodium azide: a POISONOUS AND HAZARDOUS SUBSTANCE which should be handled by trained staff only.

Handling Advice: Minimize freezing and thawing.

Storage: -20 °C

Storage Comment: Aliquot and store at -20°C, with minimal freeze/thawing. A working aliquot may be refrigerated

at 4°C for a few weeks and still remain viable.



Western Blotting

Image 1. ABIN870665 (0.03µg/ml) staining of HeLa lysate (35µg protein in RIPA buffer). Primary incubation was 1 hour. Detected by chemiluminescence.