

Datasheet for ABIN870670
anti-NPR3 antibody (AA 520-533)[Go to Product page](#)

4 Images

Overview

Quantity:	100 µg
Target:	NPR3
Binding Specificity:	AA 520-533
Reactivity:	Human
Host:	Goat
Clonality:	Polyclonal
Conjugate:	This NPR3 antibody is un-conjugated
Application:	Western Blotting (WB), ELISA, Immunohistochemistry (IHC)

Product Details

Purpose:	NPR3 (aa520-533)
Immunogen:	Peptide with sequence C-HRELREDSIRSHFS, from the C Terminus of the protein sequence according to NP_000899.1.
Sequence:	HRELREDSIR SHFS
Isotype:	IgG
Specificity:	The immunizing peptide represents the cytoplasmic part of the protein.
Cross-Reactivity:	Cow, Dog, Human, Mouse, Pig, Rat
Purification:	Purified from goat serum by ammonium sulphate precipitation followed by antigen affinity chromatography using the immunizing peptide.
Grade:	Verified

Target Details

Target:	NPR3
Alternative Name:	NPR3 (NPR3 Products)
Background:	NPR3, natriuretic peptide receptor C/guanylate cyclase C (atrionatriuretic peptide receptor C), ANPRC, GUCY2B, NPRC, ANP-C, ANPR-C, NPR-C, OTTHUMP00000197048, OTTHUMP00000220980, atrial natriuretic peptide clearance receptor, atrial natriuretic peptide re
Molecular Weight:	59.8kDa
Gene ID:	4883, 18162, 25339
NCBI Accession:	NP_000899
Pathways:	cAMP Metabolic Process

Application Details

Application Notes:	Immunohistochemistry: In paraffin embedded Human Kidney shows staining of brush borders in select PCT. Recommended concentration: 2-4 µg/mL. Paraffin embedded Human Prostate. Recommended concentration: 10 µg/mL. Western Blot: Approx 52 kDa band observed in Human Placenta lysates (calculated MW of 59.8 kDa according to NP_000899.1). Recommended concentration: 1-3 µg/mL. Peptide ELISA: antibody detection limit dilution 1:16000.
Restrictions:	For Research Use only

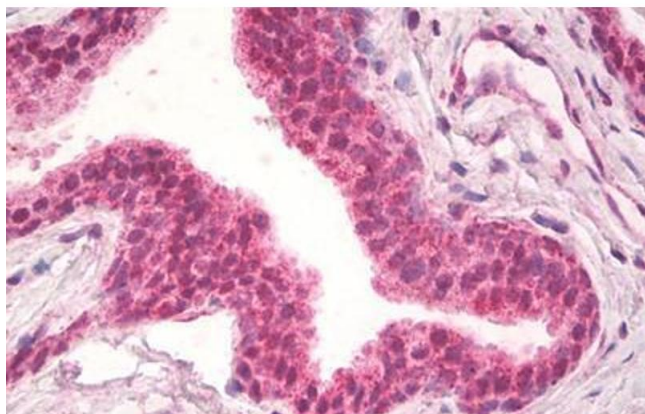
Handling

Format:	Liquid
Concentration:	0.5 mg/mL
Buffer:	Supplied at 0.5 mg/mL in Tris saline, 0.02 % sodium azide, pH 7.3 with 0.5 % bovine serum albumin.
Preservative:	Sodium azide
Precaution of Use:	This product contains Sodium azide: a POISONOUS AND HAZARDOUS SUBSTANCE which should be handled by trained staff only.
Handling Advice:	Minimize freezing and thawing.
Storage:	-20 °C

Handling

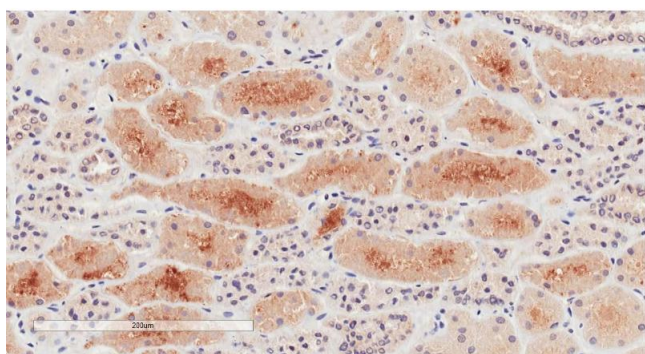
Storage Comment: Aliquot and store at -20°C, with minimal freeze/thawing. A working aliquot may be refrigerated at 4°C for a few weeks and still remain viable.

Images



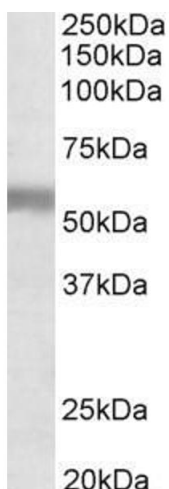
Immunohistochemistry

Image 1. ABIN870670 (10µg/ml) staining of paraffin embedded Human Prostate. Steamed antigen retrieval with citrate buffer pH 6, AP-staining.



Immunohistochemistry

Image 2. ABIN870670 (2µg/ml) staining of paraffin embedded Human Kidney. Microwaved antigen retrieval with citrate buffer pH 6, HRP-staining.



Western Blotting

Image 3. ABIN870670 (1µg/ml) staining of Human Placenta lysate (35µg protein in RIPA buffer). Primary incubation was 1 hour. Detected by chemiluminescence.

Please check the [product details page](#) for more images. Overall 4 images are available for ABIN870670.