

Datasheet for ABIN870679

**anti-Chitotriosidase 1 antibody (AA 409-423)**[Go to Product page](#)**1** Image

## Overview

Quantity:	100 µg
Target:	Chitotriosidase 1 (CHIT1)
Binding Specificity:	AA 409-423
Reactivity:	Human
Host:	Goat
Clonality:	Polyclonal
Conjugate:	This Chitotriosidase 1 antibody is un-conjugated
Application:	Western Blotting (WB), ELISA

## Product Details

Purpose:	CHIT1 (aa409-423)
Immunogen:	Peptide with sequence EHGPSPGQDTFCQ GK, from the internal region (near C Terminus) of the protein sequence according to NP_003456.1.
Sequence:	EHGPSPGQDT FCQ GK
Isotype:	IgG
Cross-Reactivity:	Human
Purification:	Purified from goat serum by ammonium sulphate precipitation followed by antigen affinity chromatography using the immunizing peptide.
Grade:	Verified

## Target Details

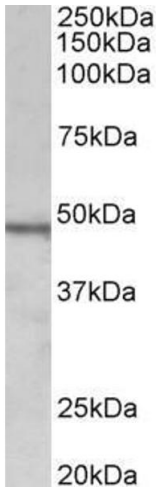
Target:	Chitotriosidase 1 (CHIT1)
Alternative Name:	CHIT1 ( <a href="#">CHIT1 Products</a> )
Background:	CHIT1, chitinase 1 (chitotriosidase), CHI3, CHIT, FLJ00314, MGC125322, OTTHUMP00000217083, OTTHUMP00000217084, OTTHUMP00000217085, chitinase-1, chitotriosidase-1, plasma methyumbelliferyl tetra-N-acetylchitotetraoside hydrolase
Molecular Weight:	51.7kDa
Gene ID:	1118
NCBI Accession:	<a href="#">NP_003456</a>

## Application Details

Application Notes:	Western Blot: Approx 48 kDa band observed in lysates of cell line Daudi (calculated MW of 51.7 kDa according to NP_003456.1). Recommended concentration: 1-3 µg/mL. Peptide ELISA: antibody detection limit dilution 1:2000.
Restrictions:	For Research Use only

## Handling

Format:	Liquid
Concentration:	0.5 mg/mL
Buffer:	Supplied at 0.5 mg/mL in Tris saline, 0.02 % sodium azide, pH 7.3 with 0.5 % bovine serum albumin.
Preservative:	Sodium azide
Precaution of Use:	This product contains Sodium azide: a POISONOUS AND HAZARDOUS SUBSTANCE which should be handled by trained staff only.
Handling Advice:	Minimize freezing and thawing.
Storage:	-20 °C
Storage Comment:	Aliquot and store at -20°C, with minimal freeze/thawing. A working aliquot may be refrigerated at 4°C for a few weeks and still remain viable.



Western Blotting

**Image 1.** ABIN870679 (1µg/ml) staining of Daudi lysate (35µg protein in RIPA buffer). Primary incubation was 1 hour. Detected by chemiluminescence.