

Datasheet for ABIN870680

anti-SLC5A1 antibody (Internal Region)

5 Images

[Go to Product page](#)

Overview

Quantity:	100 µg
Target:	SLC5A1
Binding Specificity:	Internal Region
Reactivity:	Rat
Host:	Goat
Clonality:	Polyclonal
Conjugate:	This SLC5A1 antibody is un-conjugated
Application:	Western Blotting (WB), ELISA, Immunohistochemistry (IHC)

Product Details

Purpose:	Slc5a1 (rat)
Immunogen:	Peptide with sequence C-KDTIEIDAEAPQKEK, from the internal region of the protein sequence according to NP_037165.1.
Sequence:	KDTIEIDAEA PQKEK
Isotype:	IgG
Cross-Reactivity:	Rat
Purification:	Purified from goat serum by ammonium sulphate precipitation followed by antigen affinity chromatography using the immunizing peptide.
Grade:	Verified

Target Details

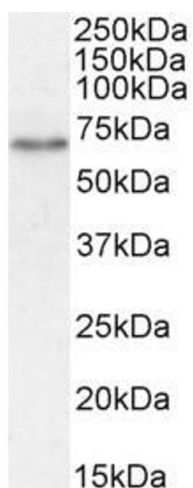
Target:	SLC5A1
Alternative Name:	Slc5a1 (SLC5A1 Products)
Background:	Slc5a1, solute carrier family 5 (sodium/glucose cotransporter), member 1, MGC93553, Sglt1, Na(+)/glucose cotransporter 1, Solute carrier family 5, member alpha 1 (Na+/glucose cotransporter), high affinity sodium-glucose cotransporter, sodium/glucose cotra
Gene ID:	25552
NCBI Accession:	NP_037165

Application Details

Application Notes:	<p>Immunohistochemistry: Paraffin embedded Rat Kidney. Recommended concentration: 10 µg/mL.</p> <p>Western Blot: Approx 70 kDa band observed in Rat Kidney lysates (calculated MW of 72.1 kDa according to NP_037165.1). Recommended concentration: 0.3-2 µg/mL. Primary incubation 1 hour at room temperature.</p> <p>Peptide ELISA: antibody detection limit dilution 1:32000.</p>
Restrictions:	For Research Use only

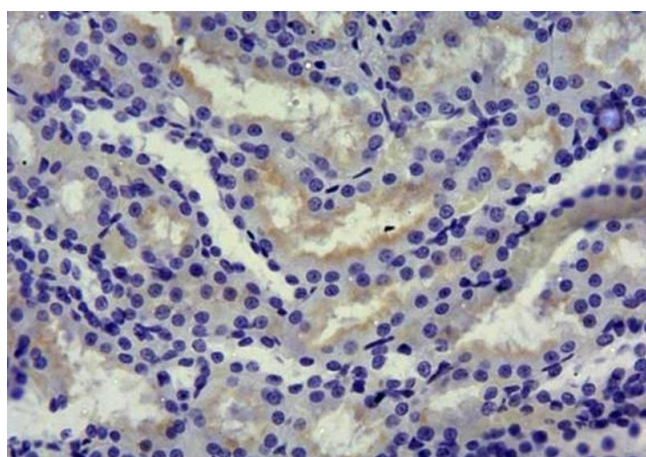
Handling

Format:	Liquid
Concentration:	0.5 mg/mL
Buffer:	Supplied at 0.5 mg/mL in Tris saline, 0.02 % sodium azide, pH 7.3 with 0.5 % bovine serum albumin.
Preservative:	Sodium azide
Precaution of Use:	This product contains Sodium azide: a POISONOUS AND HAZARDOUS SUBSTANCE which should be handled by trained staff only.
Handling Advice:	Minimize freezing and thawing.
Storage:	-20 °C
Storage Comment:	Aliquot and store at -20°C, with minimal freeze/thawing. A working aliquot may be refrigerated at 4°C for a few weeks and still remain viable.



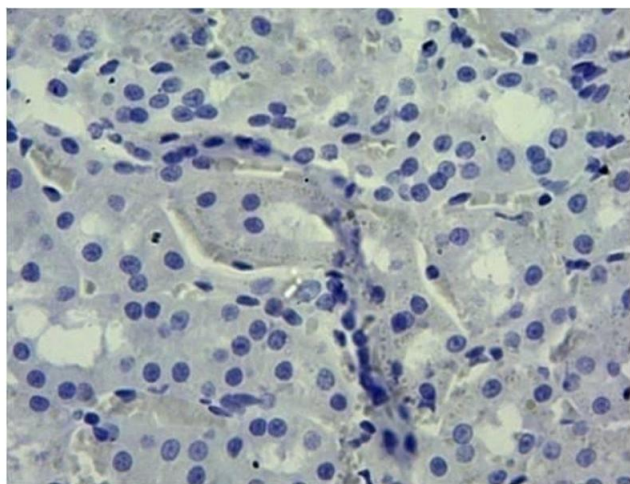
Western Blotting

Image 1. ABIN870680 (1µg/ml) staining of Rat Kidney lysate (35µg protein in RIPA buffer). Detected by chemiluminescence.



Immunohistochemistry

Image 2. ABIN870680 (10µg/ml): Staining of paraffin embedded Rat Kidney. Heat induced antigen retrieval with citrate buffer pH 6, HRP-Staining (1:500).



Immunohistochemistry

Image 3. ABIN870680 Negative Control showing staining of paraffin embedded Rat Kidney, with no primary antibody.

Please check the [product details page](#) for more images. Overall 5 images are available for ABIN870680.