

Datasheet for ABIN870682
anti-KLHDC8B antibody (Internal Region)[Go to Product page](#)

1 Image

Overview

Quantity:	100 µg
Target:	KLHDC8B
Binding Specificity:	Internal Region
Reactivity:	Human, Mouse
Host:	Goat
Clonality:	Polyclonal
Conjugate:	This KLHDC8B antibody is un-conjugated
Application:	Western Blotting (WB), ELISA

Product Details

Purpose:	KLHDC8B
Immunogen:	Peptide with sequence C-TKLPRSLRMRDK, from the internal region of the protein sequence according to NP_775817.1.
Sequence:	TKLPRSLRMR DK
Isotype:	IgG
Cross-Reactivity:	Cow, Dog, Human, Mouse, Rat
Purification:	Purified from goat serum by ammonium sulphate precipitation followed by antigen affinity chromatography using the immunizing peptide.
Grade:	Verified

Target Details

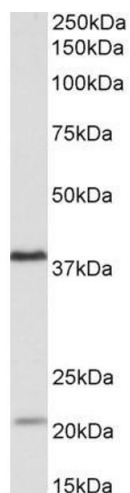
Target:	KLHDC8B
Alternative Name:	KLHDC8B (KLHDC8B Products)
Background:	KLHDC8B, kelch domain containing 8B, FLJ11302, MGC35097, kelch domain-containing protein 8B
Molecular Weight:	37.7kDa
Gene ID:	200942, 78267, 306589
NCBI Accession:	NP_775817

Application Details

Application Notes:	Western Blot: Approx 38 kDa band observed in lysates of cell lines Daudi, Jurkat and NIH3T3 (calculated MW of 37.7 kDa according to NP_775817.1). Recommended concentration: 0.5-2 µg/mL. An additional band of unknown identity was also consistently observed a Peptide ELISA: antibody detection limit dilution 1:64000.
Restrictions:	For Research Use only

Handling

Format:	Liquid
Concentration:	0.5 mg/mL
Buffer:	Supplied at 0.5 mg/mL in Tris saline, 0.02 % sodium azide, pH 7.3 with 0.5 % bovine serum albumin.
Preservative:	Sodium azide
Precaution of Use:	This product contains Sodium azide: a POISONOUS AND HAZARDOUS SUBSTANCE which should be handled by trained staff only.
Handling Advice:	Minimize freezing and thawing.
Storage:	-20 °C
Storage Comment:	Aliquot and store at -20°C, with minimal freeze/thawing. A working aliquot may be refrigerated at 4°C for a few weeks and still remain viable.



Western Blotting

Image 1. ABIN870682 (0.5µg/ml) staining of Daudi lysate (35µg protein in RIPA buffer). Primary incubation was 1 hour. Detected by chemiluminescence.