



[Go to Product page](#)

Datasheet for ABIN870684

## anti-SLC47A2 antibody (Internal Region)

### 2 Images

#### Overview

Quantity:	100 µg
Target:	SLC47A2
Binding Specificity:	Internal Region
Reactivity:	Human
Host:	Goat
Clonality:	Polyclonal
Conjugate:	This SLC47A2 antibody is un-conjugated
Application:	Western Blotting (WB), ELISA, Immunohistochemistry (IHC)

#### Product Details

Purpose:	SLC47A2
Immunogen:	Peptide with sequence SECHVDFFRTPEEAH, from the internal region (near C terminus) of the protein sequence according to NP_690872.2, NP_001093116.1.
Sequence:	SECHVDFFRTPEEAH
Isotype:	IgG
Specificity:	This antibody is expected to recognize both reported isoforms (NP_690872.2, NP_001093116.1).
Cross-Reactivity:	Human
Purification:	Purified from goat serum by ammonium sulphate precipitation followed by antigen affinity chromatography using the immunizing peptide.

## Product Details

---

Grade: Verified

## Target Details

---

Target: SLC47A2

Alternative Name: SLC47A2 ([SLC47A2 Products](#))

Background: SLC47A2, solute carrier family 47, member 2, FLJ31196, MATE2, MATE2-B, MATE2-K, MATE2K, H+/organic cation antiporter, MATE-2, OTTHUMP00000065791, hMATE-2, kidney-specific H(+)/organic cation antiporter, multidrug and toxin extrusion 2, multidrug and toxin

Molecular Weight: 61.0kDa

Gene ID: 146802

NCBI Accession: [NP\\_690872](#), [NP\\_001093116](#)

## Application Details

---

Application Notes: Immunohistochemistry: Paraffin embedded Human Kidney. Recommended concentration: 5 µg/mL.  
Western Blot: Approx 60 kDa band observed in Human Testis lysates (calculated MW of 61.0 kDa according to NP\_001093116.1). Recommended concentration: 0.1-1 µg/mL. Primary incubation was 1 hour.  
Peptide ELISA: antibody detection limit dilution 1:32000.

Restrictions: For Research Use only

## Handling

---

Format: Liquid

Concentration: 0.5 mg/mL

Buffer: Supplied at 0.5 mg/mL in Tris saline, 0.02 % sodium azide, pH 7.3 with 0.5 % bovine serum albumin.

Preservative: Sodium azide

Precaution of Use: This product contains Sodium azide: a POISONOUS AND HAZARDOUS SUBSTANCE which should be handled by trained staff only.

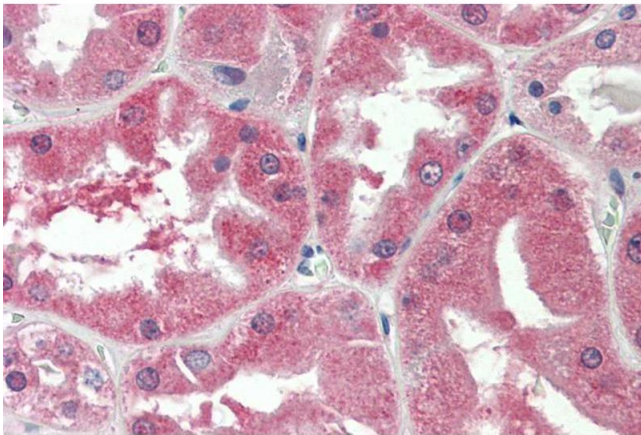
Handling Advice: Minimize freezing and thawing.

## Handling

Storage: -20 °C

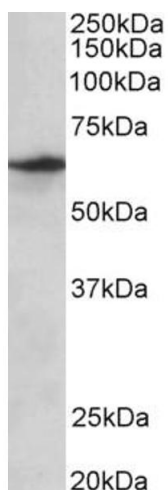
Storage Comment: Aliquot and store at -20°C, with minimal freeze/thawing. A working aliquot may be refrigerated at 4°C for a few weeks and still remain viable.

## Images



### Immunohistochemistry

**Image 1.** ABIN870684 (5µg/ml) staining of paraffin embedded Human Kidney. Steamed antigen retrieval with citrate buffer pH 6, AP-staining.



### Western Blotting

**Image 2.** ABIN870684 (0.3µg/ml) staining of Human Testis lysate (35µg protein in RIPA buffer). Detected by chemiluminescence.