



[Go to Product page](#)

Datasheet for ABIN870693

anti-PCDH17 antibody (AA 1098-111)

1 Image

Overview

Quantity:	100 µg
Target:	PCDH17
Binding Specificity:	AA 1098-111
Reactivity:	Mouse
Host:	Goat
Clonality:	Polyclonal
Conjugate:	This PCDH17 antibody is un-conjugated
Application:	Western Blotting (WB), ELISA

Product Details

Purpose:	PCDH17 (aa1098-111)
Immunogen:	Peptide with sequence C-RVFADVHSRASRDS, from the internal region (near C Terminus) of the protein sequence according to NP_001035519.1.
Sequence:	RVFADVHSRA SRDS
Isotype:	IgG
Cross-Reactivity:	Cow, Human, Mouse, Pig, Rat
Purification:	Purified from goat serum by ammonium sulphate precipitation followed by antigen affinity chromatography using the immunizing peptide.
Grade:	Verified

Target Details

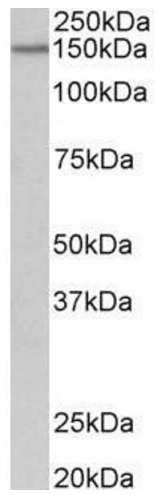
Target:	PCDH17
Alternative Name:	PCDH17 (PCDH17 Products)
Background:	PCDH17, protocadherin 17, PCDH68, PCH68, protocadherin 68, protocadherin-17, protocadherin-68
Molecular Weight:	126kDa
Gene ID:	27253, 219228, 306055
NCBI Accession:	NP_001035519

Application Details

Application Notes:	Western Blot: Approx 150 kDa band observed in Mouse fetal Brain lysates (calculated MW of 126 kDa according to Human NP_001035519.1 and Mouse NP_001013775.2). Recommended concentration: 0.1-0.3 µg/mL. Peptide ELISA: antibody detection limit dilution 1:8000.
Restrictions:	For Research Use only

Handling

Format:	Liquid
Concentration:	0.5 mg/mL
Buffer:	Supplied at 0.5 mg/mL in Tris saline, 0.02 % sodium azide, pH 7.3 with 0.5 % bovine serum albumin.
Preservative:	Sodium azide
Precaution of Use:	This product contains Sodium azide: a POISONOUS AND HAZARDOUS SUBSTANCE which should be handled by trained staff only.
Handling Advice:	Minimize freezing and thawing.
Storage:	-20 °C
Storage Comment:	Aliquot and store at -20°C, with minimal freeze/thawing. A working aliquot may be refrigerated at 4°C for a few weeks and still remain viable.



Western Blotting

Image 1. ABIN870693 (0.2 μ g/ml) staining of Mouse fetal Brain lysate (35 μ g protein in RIPA buffer). Primary incubation was 1 hour. Detected by chemiluminescence.